

PLONK

CRAZY GOLF

PROJECT OVERVIEW



ABOUT PLONK

Thank you for considering Plonk Golf for your crazy golf commission.

Plonk Crazy Golf was founded by myself, a production designer from the film and entertainment industry. Together with my Creative team, we opened our first pop up in Shoreditch in 2014. We have now had over 1/2 million players from across London and the South East of England.

Our courses are totally unique and customisable, making our mini golf business like no other. We design, build and manage our courses, so we know better than any other mini golf manufacturer what is best for a profitable and successful mini golf business.

We hope this project overview packs explains in greater detail our process and the journey we will be going on together to get your crazy golf creation up and running and turning healthy profits.

Yours Sincerely,






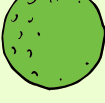
Elliot Scott

Managing Director and Founder



PLONK

PROJECT OVERVIEW - APPROX COSTS

	<u>DURATION</u>	<u>COST POINTS</u>
 FEASABILITY STUDY CONCEPT ART, FLOORPLAN, LOOSE FINANCIALS	1 WEEK	£1000 + VAT
 DESIGN STAGE & DRAWINGS If using off the shelf designs we can negate this service. We would just charge for a Feasability Study.	4 WEEKS	£10,000 + VAT
 FULL COSTINGS & SIGN OFF	2 WEEKS	INCLUDED ABOVE
 CONSTRUCTION / EQUIPMENT	4 WEEKS MIN	From £30,000 + VAT Varies On Product
 COURSE INSTALLATION	UP TO 1 WEEK	LOCAL CONTRACTOR
 HANDOVER - PAPERWORK / MANUALS / HOUSE RULES	INCLUDED	

Postage and Packaging is ontop of this breakdown.

Please note cost vary from project to project. We can deliver courses in fast timescales if needed.
The chart is to show our clients time frames and points of payment, not final costings.



FEASIBILITY STUDY

FLOORPLANS & VENUE

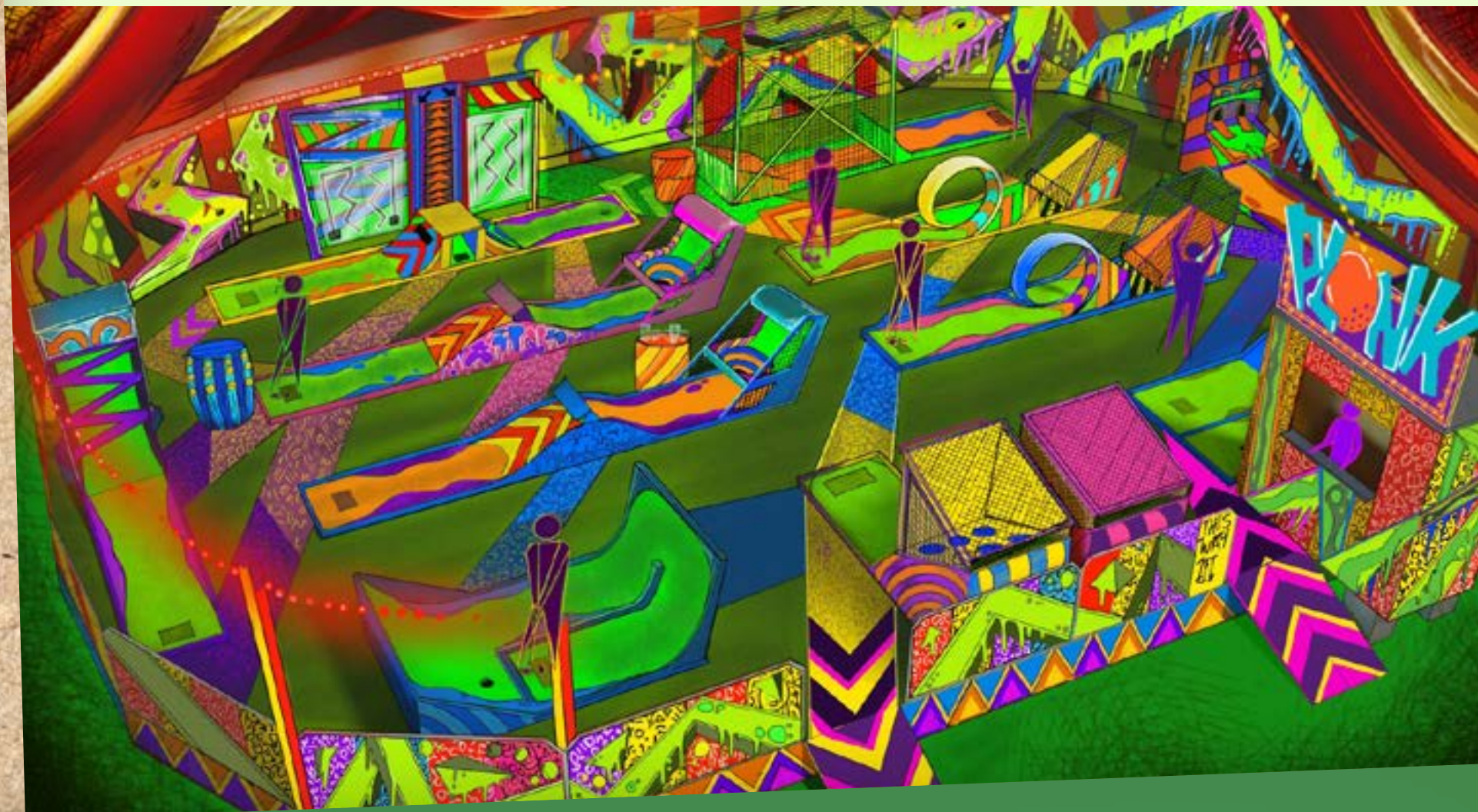
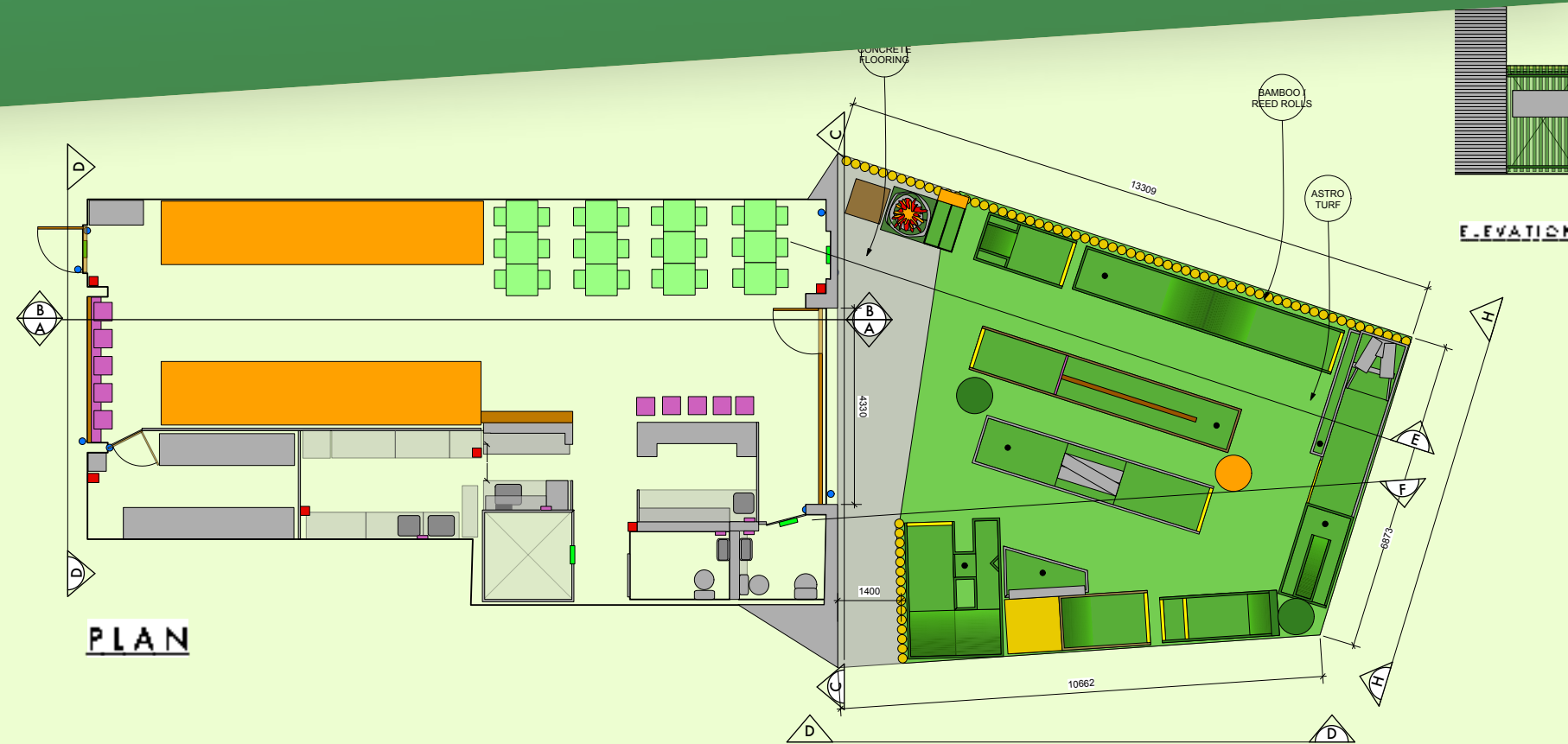
We check against your floorplans that your space is appropriate for a minimum of a 9 hole course.

If floorplans are not available we can do a location visits and detailed survey of your venue.

We check that your space has the right access and fire routes to be able to hold enough customers to be profitable

We offer a loose course design that we feel would be appropriate for the venue.

We advise on operational elements such as bar location and size, staff kiosks and cloak rooms.



DESIGN PROCESS

COURSE DESIGN

MOOD BOARDS

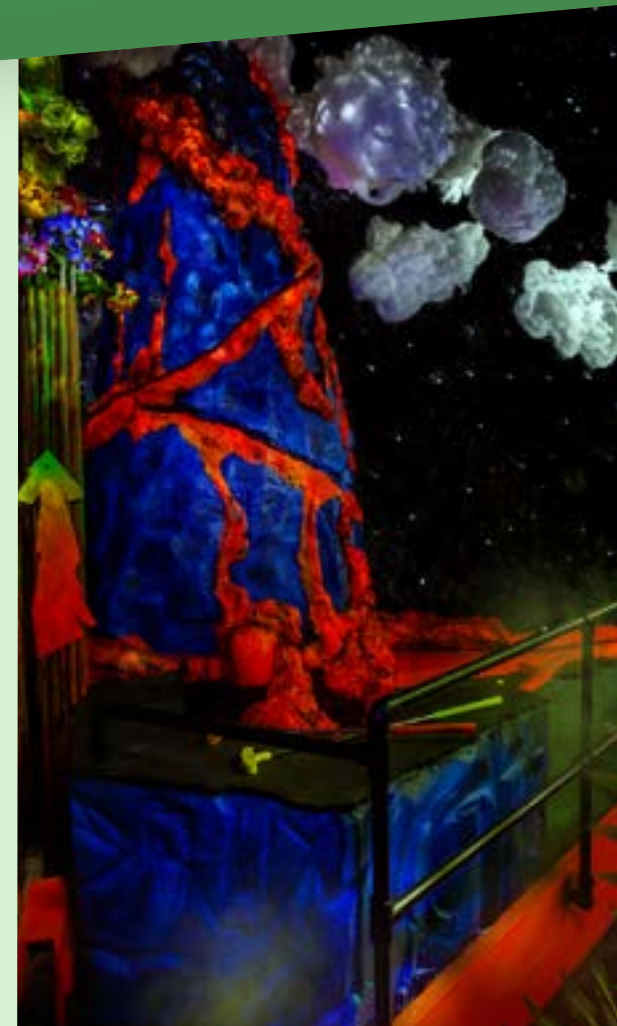
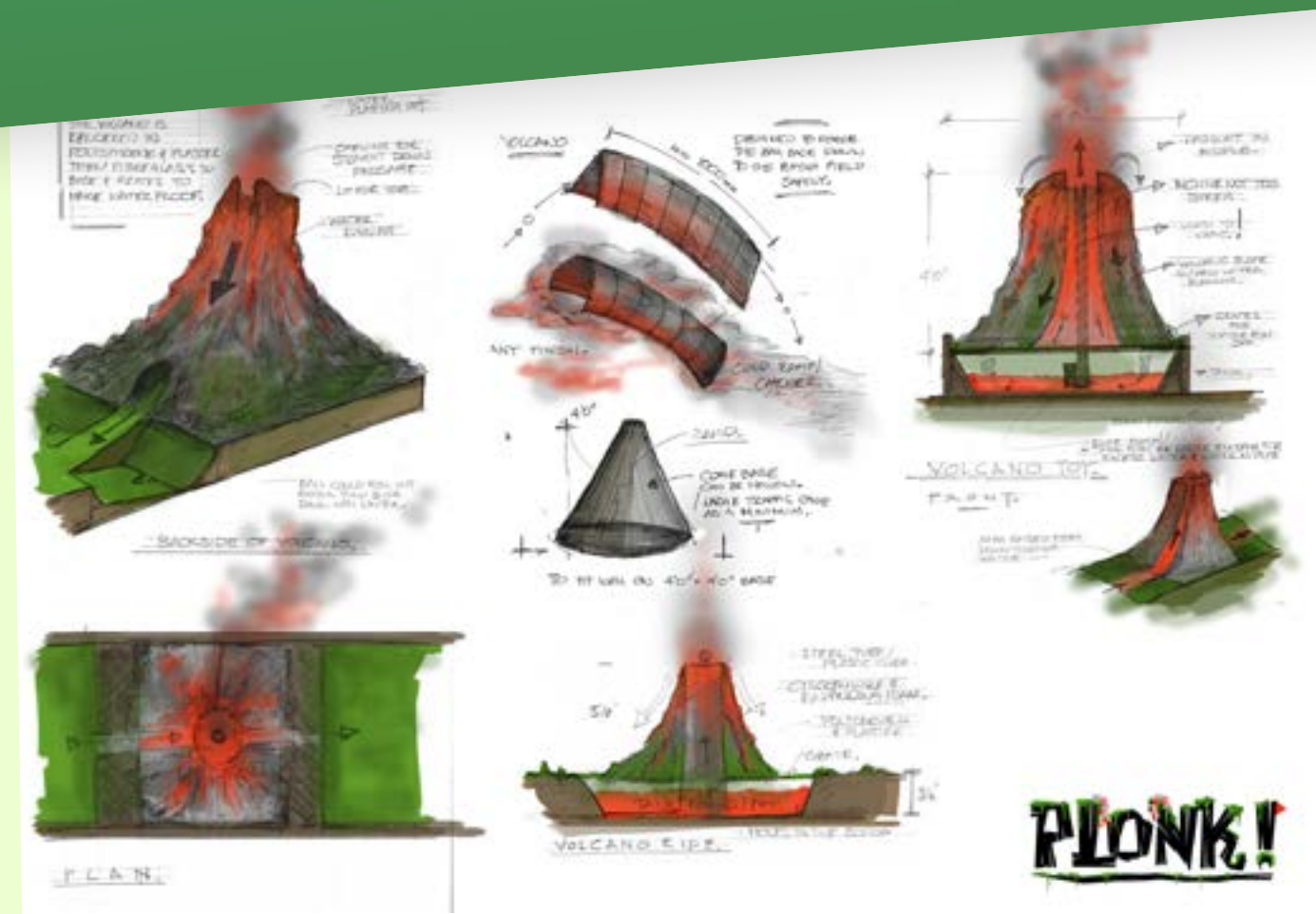
To start the design process we ask our clients to come up with mood-board or a Pinterest page of ideas they like or feel would work with their venue. We also will come up with a mood-board based on a conversation.

SKETCHES

Once the mood-board has been approved we create some black and white sketches of the course holes, and the venue. These will be a collection of loose ideas that can be discussed and best ideas chosen to take to the next stage.

EARLY CONCEPT PAINTINGS

At this point we take the selected sketch ideas and add colour and tone to



ENVIRONMENT DESIGN

SET PIECES

Set pieces are designed as the holes, with a sketch stage and a full coloured stage. We will come up with designs and ideas for these from our mood-boards. Where items can be purchased to save money we will offer up options from trusted suppliers.

ELEVATIONS AND PLANS

Once we have understood the budgets available for environments we can offer sketches and elevations of wall designs and set pieces. These 2D drawings will show the scale of the finished design work, set pieces and murals.

MURALS

Sketch versions of murals will be created and once signed off we can add colour to the paintings. For the final work these paintings will be created by hand or sent to print depending on the style required.



FULL COSTINGS & SIGN OFF

PLONK

APPROXIMATE COST BREAKDOWN

PLONK

COURSE COSTINGS

COURSE PLAYDECK

This is charged by the meter and includes bumpers, the deck and astroturf.

OBSTACLES & MECHANISMS

Each Obstacle has a different cost, so this will be based on our design process.

LIGHTING

This covers lighting for the course playdecks, obstacles, not environmental lighting.

COST OF OPERATIONS AREAS

This cost is dependant on clients needs for bar areas, kiosks, lockers, informational signs and cloakrooms

EQUIPMENT & STOCK

This covers stock of clubs for players of all sizes, club stands, scorecards, pencils, boards

ENVIRONMENT COSTINGS

SET PIECES

This is charged by the meter and includes bumpers, the deck and astroturf

WALL COVERAGE

We cost this based on the elevations drawn up in the design process.

Installation and transport will be added to the total job once it has been fully signed off.

LIGHTING & PROJECTIONS

This covers lighting for environment and theming, NOT house lights or emergency lights.

Projection mapping is costed based on animation creation and hardware costs.

COURSE DRESSING

This covers all of the proliferal course dressing, may it be plants to neon lights, drinks stands and props.

+ INSTALLATION & DELIVERY

CONSTRUCTION

WORKSHOP CONSTRUCTION

Once the final designs have been signed off and the payment for the job has been taken, our team can get to work in our workshop making the course from scratch.

A full set of construction contracts will be drawn up and signed, based on the final construction drawings issued.]

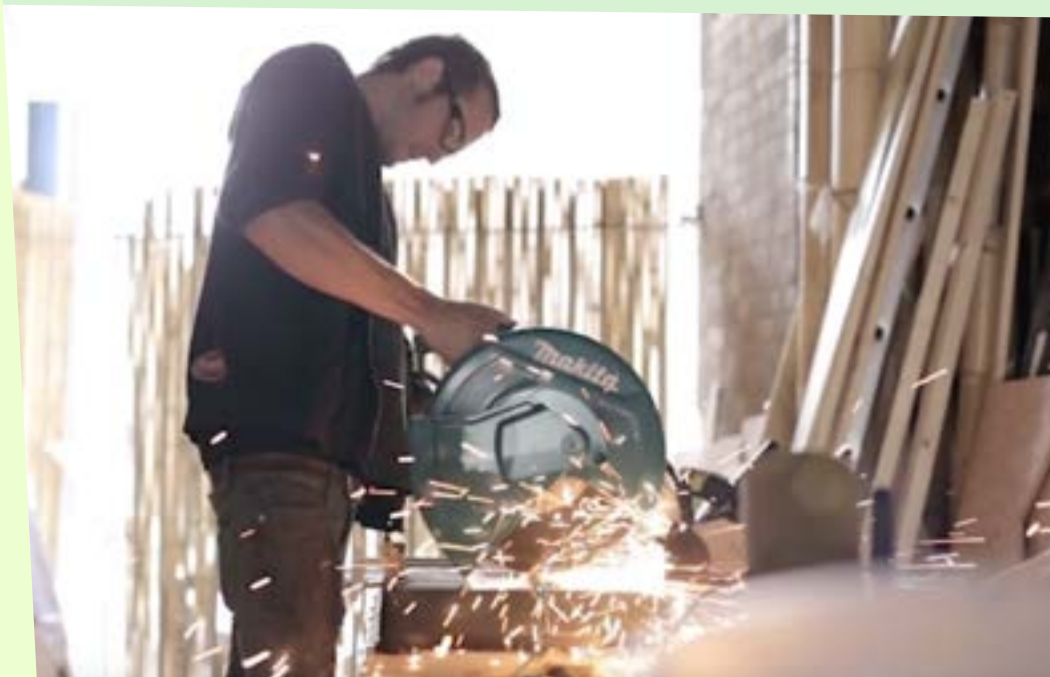
The project will be tracked regularly on a shared project management app so the client is always on top of the construction phase.

Whilst our team in the workshop are building our graphic designers and illustrators will be creating signs, murals and projections in the studio. The development of these can be tracked and shared online as they develop.

PHOTOS AND VIDEOS

As we construct the course and dressing we will take photos and videos to inform the client as to how the project is coming along.

Where we can we will film time-lapses of your course being created so you can share them on your social media or after opening as part of your build diary and story.



PLONK

INSTALLATION

WHAT WE NEED TO INSTALL

Once the course arrives on site we will begin installation. For us to be able to do our job we will need the all of the following completed:

- **HOUSE LIGHTING AND EMERGENCY LIGHTING**
- **FLOORING AND CEILINGS** - These will be finished based on our design discussions, and carried out by your construction team.
- **A CLEAR SPACE** - We will need the venue to be totally clear for us to work.
- **BARS, KIOSKS, CLOAKROOMS** - If we are not providing them and if they are in our space.
- **PLUG SOCKETS / POWER & FUSEBOARDS** - We will show you where we need power and our requirements.

LENGTH OF INSTALL

The length of install will depend on the amount of set design elements being added. Most of our course installation can happen very quickly.

Our clients will be informed of all needs of our team for working on site.



TRAINING & HANDOVER

STAFF TRAINING

Once the course has been play tested and is ready for handover, we will invite your team leader for a play and training session on the maintenance, operations and staffing for the course.

Once we have run through the course with management we will do a training session and round with your staff.

We will also supply training manuals which will aid your team in sales tactics, pace of play and customer handling. This all make a big difference to your profitability at peak times.

OPERATIONAL PACKS

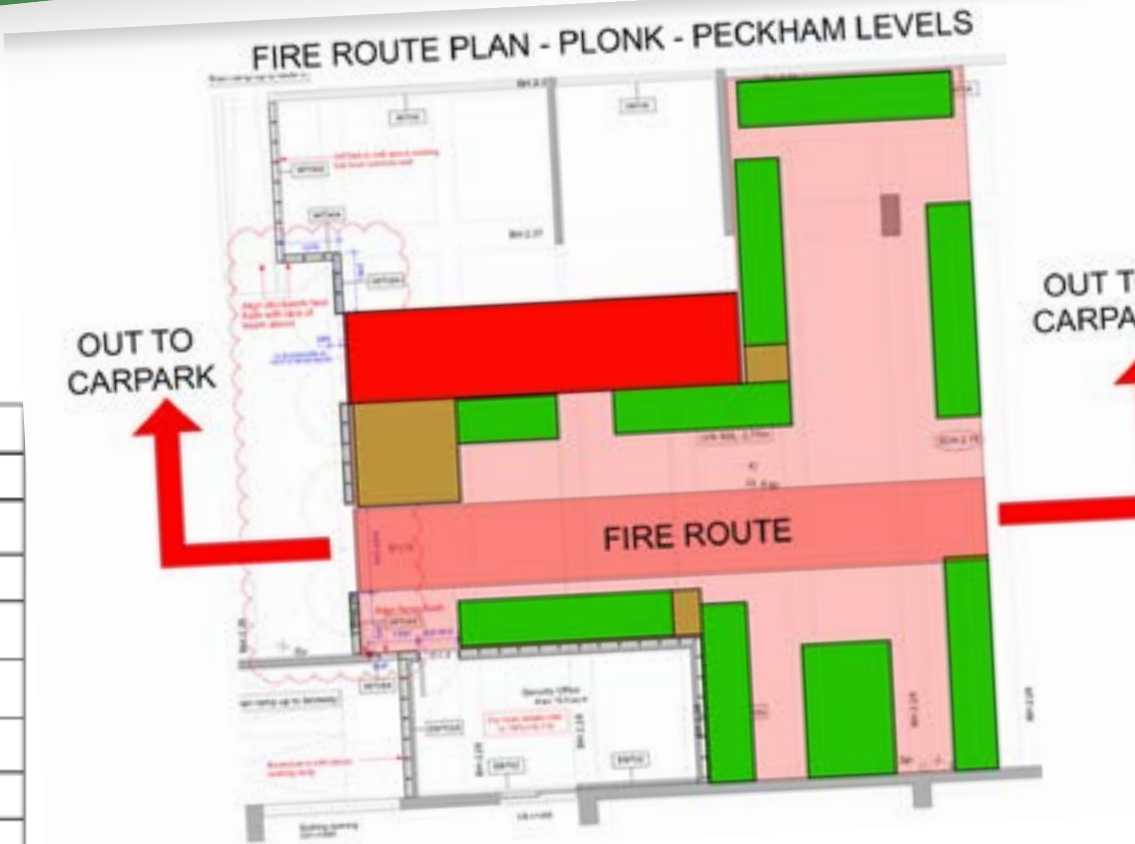
We provide extensive paperwork with every course. These can be sent to your insurance provider to make sure you have everything in order before opening. At an extra cost we can have these packs translated.

- OPERATIONAL RISK ASSESSMENTS
- FIRE TREATMENT FACT SHEETS
- STAFF TRAINING MANUALS
- FIRE ROUTE PLANS
- MAINTENANCE ADVICE PACKS
- WARRANTIES ON STOCK

Plonk Golf Induction Pack and Retraining Manual for Venue Managers and Host Staff – 2018

CONTENTS
This deck is broken up into separate sections:

Name of Trainee:	Name of Trainer:
1	Cleanliness and Health and Safety
2	Customer Service
3	Course Operations
4	Payments and Reporting
5	Pace of Play
6	Protection of Company and Personal Property
7	Manual Handling
8	Preventing Accidents on the Premises
9	Special Effects, Smoke Machines and Lighting



Plonk Golf Hoxton – Golf Course– Risk Assessment – Venue Operation

Hazard	Who is at Risk	What action is taken now	Rate of Risk	What further action can be taken
Injury through slips, trips and falls	Participants, spectators and staff	Participants are reminded not to climb or walk on the obstacles as well as being made aware of where they are on the course. House rules sign in place.	Severity of risk (S) - 1 Likelihood of risk (L) - 2 Overall risk (S x L) = 2 Low	The addition of extra signage and fencing off of certain areas of the course if the issues prevail. In certain cases, if it is deemed unsafe over prolonged issues (as all precautions have already been taken) then the removal of the obstacle is an option.
Injury through broken glass	Participants, spectators and staff	Ledges are provided for glasses to be placed during play.	Severity of risk (S) - 2 Likelihood of risk (L) - 1 Overall risk (S x L) = 2 Low	Course is checked regularly by staff to ensure that no players have broken glasses on the course. Any broken glass is cleared immediately, and the guests are restricted from accessing the area until the clear up is complete. If broken glasses become an ongoing issue, glasses will be banned from the course area.
Being hit by a club or ball	Participants, spectators and staff	Staff supervising the activity will enforce a proper queue i.e. single file as well as distributing clubs and balls in a safe manner. All participants will be briefed on safety, rules of play and conduct before playing. House rules sign in place.	Severity of risk (S) - 2 Likelihood of risk (L) - 1 Overall risk (S x L) = 2 Low	Staff will ensure that all participants receive an appropriately sized club and that younger players are only allowed to play with adult supervision. If any participant is unable to play appropriately then they will be asked to leave the course.
Unruly behaviour	Participants, spectators and staff	The operator's decision is final, refusal to abide by the operators guidance will result in play refusal & in extreme circumstances the game will close.	Severity of risk (S) - 2 Likelihood of risk (L) - 1 Overall risk (S x L) = 2 Low	Have sufficient staff to monitor and manage the number of people on the course. Staff will ensure clear lines of communication with venue staff and be known to any security personnel.
Alcohol misuse	Participants, spectators and staff	Anyone who is deemed to be excessively intoxicated will not be allowed to play the course.	Severity of risk (S) - 3 Likelihood of risk (L) - 2 Overall risk (S x L) = 6 Medium	In the event of an intoxicated participant wanting to play, the operator will refuse them service.
Equipment misuse	Participants, spectators and staff	Only one participant is allowed on each green at a time. In the case of children, a responsible adult should supervise. House rules sign in place.	Severity of risk (S) - 2 Likelihood of risk (L) - 1 Overall risk (S x L) = 2 Low	If the activity receives large numbers, then participants must be managed and will be instructed to wait until it is clear enough to continue usage.
Damage to the equipment / course	Participants, spectators and staff	The area is visually inspected by a member of staff daily before participants use the equipment, and then regularly throughout operating hours. Defects are reported and taken out of use.	Severity of risk (S) - 2 Likelihood of risk (L) - 1 Overall risk (S x L) = 2 Low	Staff will notify their manager, and any reported defects will be dealt with immediately. Any affected equipment will be marked as not to be used.
Injury through obstacles	Participants	Obstacles are checked and maintained regularly.	Severity of risk (S) - 2 Likelihood of risk (L) - 1 Overall risk (S x L) = 2 Low	Obstacles are checked and maintained regularly.



THANK YOU

If you would like to have a viewing of one of our products in action, or have further questions, please get in touch with us.

Elliot Scott
PLONK GOLF DIRECTOR

ELLIOT@PLONKGOLF.CO.UK
07800 547 985



@PLONKGOLF



#PLONKGOLF



/PLONKGOLF

www.PLONKGOLF.CO.UK



PLONK