

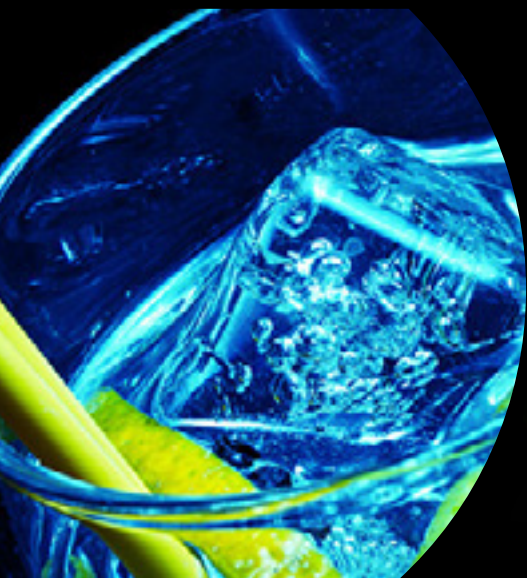
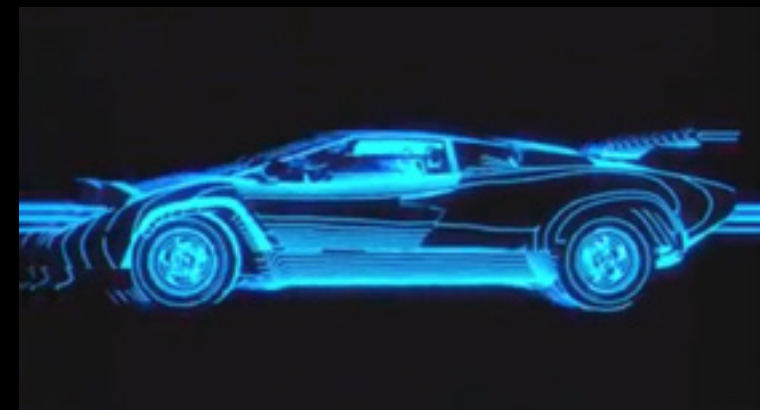


PINK

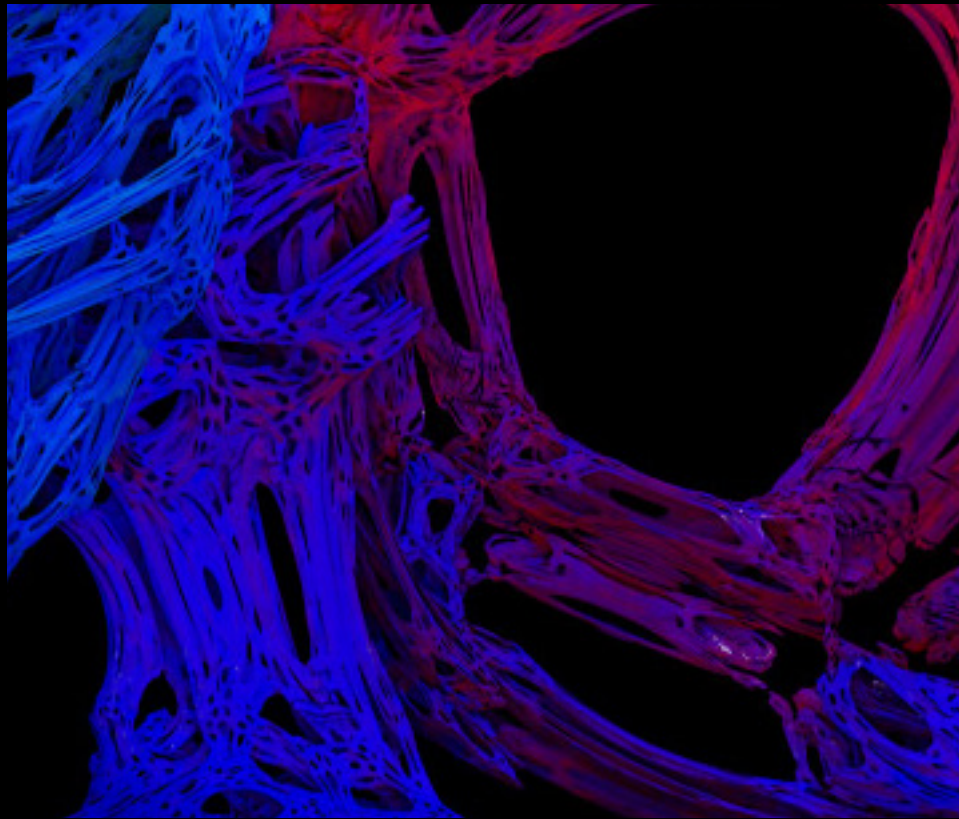
CRAZY GOLF

UV DESIGN PACK

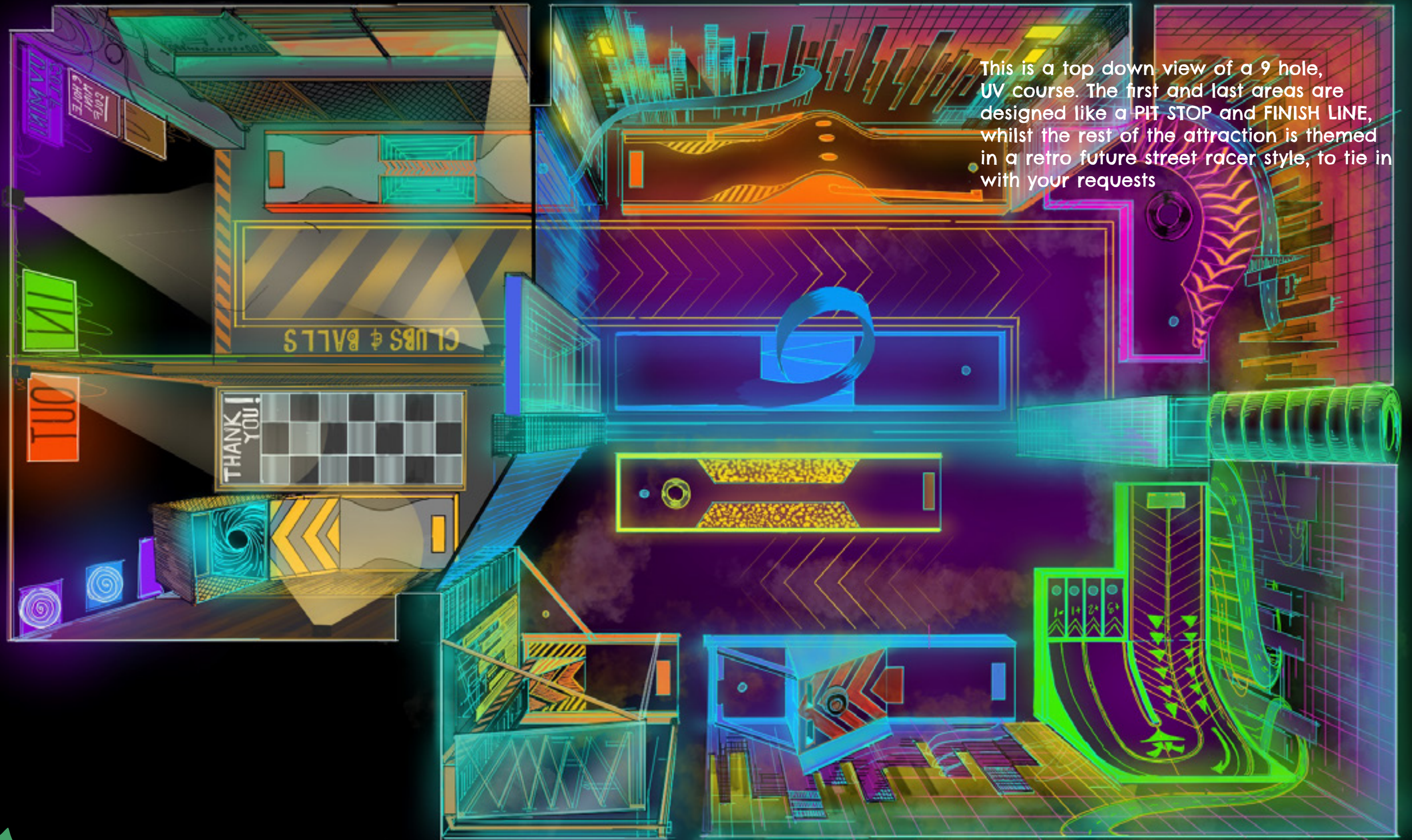
PLONK COURSES - MOOD BOARD



PLANK COURSES - MOOD BOARD - THEMING



PLONK COURSE - CONCEPT ART - TEAMSPORTS HULL



This concept art is an interpretation of the final design. Elements may change during the design process.

PLONK

THE DESIGN PROCESS

FEASIBILITY STUDY

Initially we ask for an architectural drawing of the site if one is available. If not, we ask for rough measurements of the available space so that we can draw up our own internal floorplans to assess the feasibility of the project.

These floorplans are then shared with the client, to ensure that fire routes, flow and access points are all appropriately drawn up and accurate.

COURSE DESIGN

Each of our courses is a bespoke design, and built to fit harmoniously within the specific venue.

Our design team listens to what the client is looking for in their golf course, and proceeds to make a mood board and some initial sketches and designs for feedback from the client.

Once this has been signed off and agreed, we take a small retainer fee to both fully cost the job and make technical drawings and concept art for a final sign off.

WORKSHOP BUILD

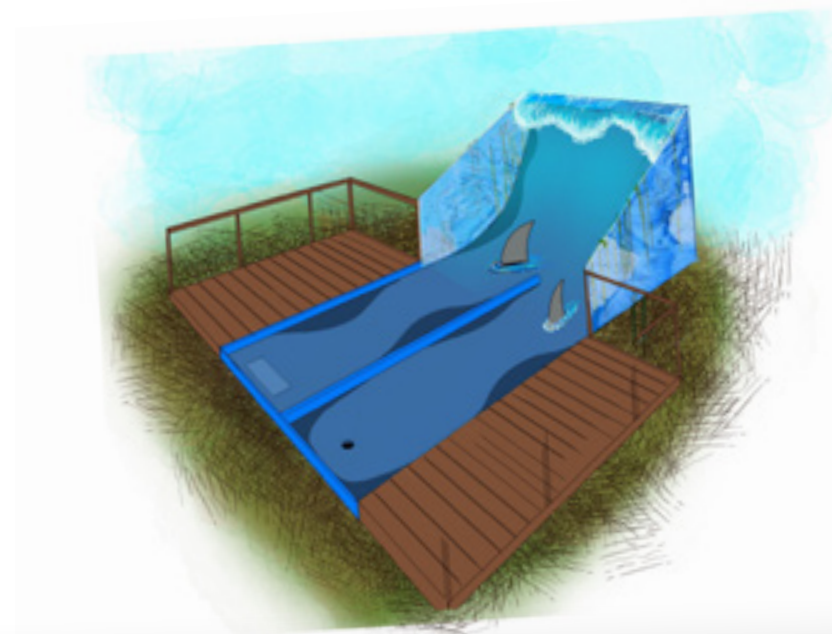
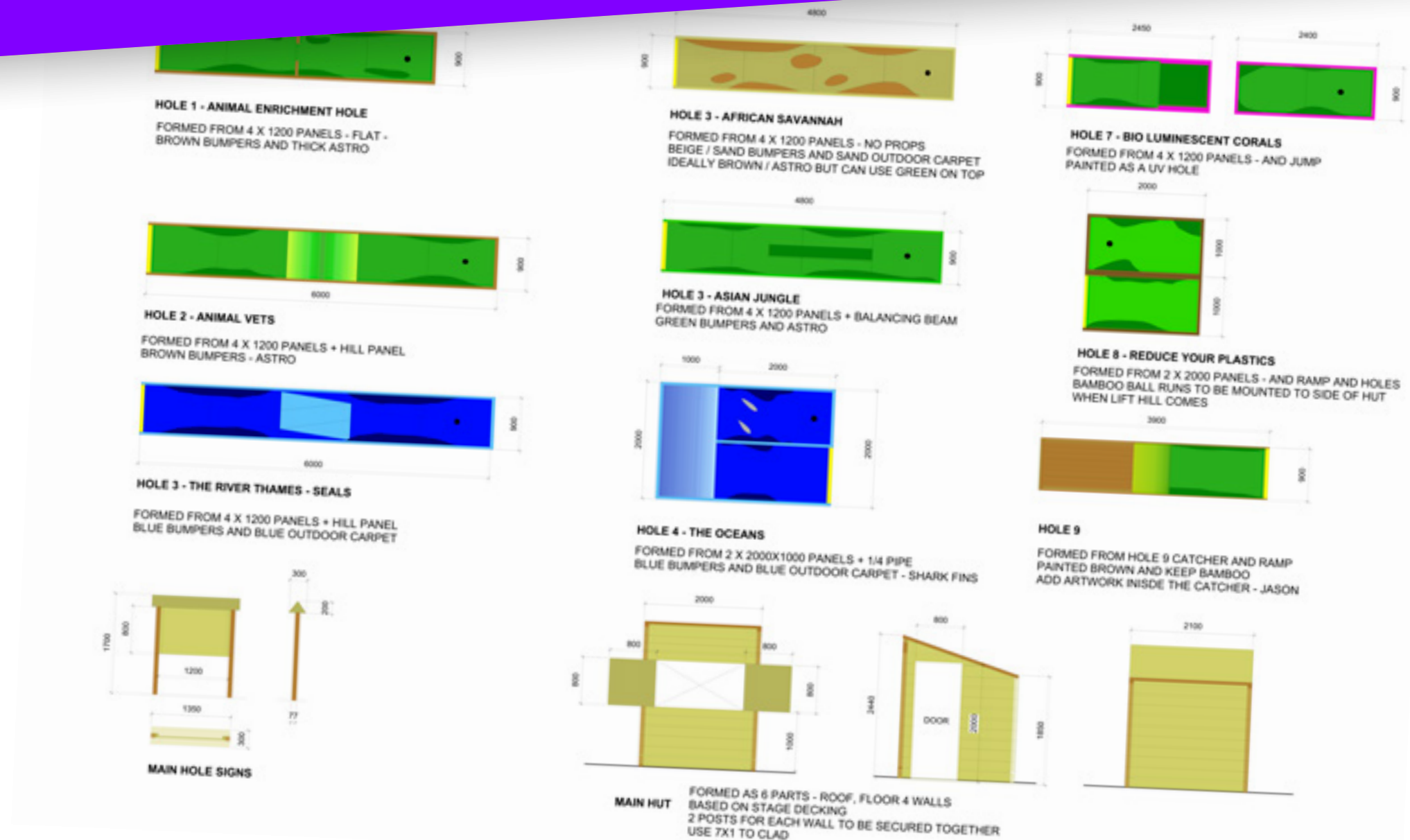
Once we have received final sign off on the submitted designs, we begin construction at our workshop.

We start by working on the theming elements, as these are the first to be fitted onsite. We then move on to build the course itself, and its constituent elements.

ONSITE INSTALL

Our time on site varies depending on the scale of the project, access and the level of fitted work that is required. Generally though, an install will be completed within two weeks.

We complete as much of the work as possible off site to mitigate any potential disturbance or inconvenience to the client.



GOLF OBSTACLES

PLONK PINBALL

Our Plonk Pinball holes really are something else!

Once you have managed to get the ball onto the playfield, you'll have to make a skill shot to get the ball into the hole - but beware, even on the Pinball hole there are sneaky routes, devilish traps and hidden bonuses!

So pull back on the plunger, aim well and hope that the ball finds its target!

HILLS

What mini golf course would be complete without a hill or two?

Our hills come in varying gradients, some with bonus "hole in one" holes at the very peak.

We also have ramps that include built in ball runs that either guarantee a hole in one, or take the player back to beginning for another lesson in putting!

LOOP DE LOOPS

Perhaps the most beloved of all our obstacles are our loops. These gravity defying golfstacles will send the ball flying out of the other side if you put too much effort into the shot... so players need to watch their speed as well as their aim!

Our loops are traditionally 1m high, but depending on the available space we can make them a lot larger. We can also provide metal loops for outdoor use – no course should be missing this element!



PLONK PINBALL



HILLS

LOOPS

GOLF OBSTACLES

BIG RAMPS

One of our earliest custom creations were our ball ramps and runs... there's nothing more satisfying than firing the ball up a ramp and watching it roll its way back down, ideally straight into the hole!

Whilst these holes are more often installed on courses aimed at adults, smaller versions can still be enjoyed by younger players.

To make these elements easier for less able players, a bespoke electric lift hill can be added if required.

BESPOKE PARTS

Sometimes when we design a course, we are left with a space to fill and there is just nothing in our arsenal that will do.

We often make bespoke obstacles to make the best use of space and play on a course. We've come up with some incredibly creative space filling solutions in the past, and some of these have become incredibly popular holes!

1/4 & 1/2 PIPES

We frequently like to challenge our players to think about the terrain they are playing on.

A quarter pipe or half pipe obstacle is a great way to do this. You instinctively think that if you just hit it up it will come down the other side... but it's just not as simple as that!



RAMPS AND BALL RUNS



BESPOKE PARTS



1/4 PIPES & 1/2 PIPES

GOLF OBSTACLES

BALANCING HOLES

Why use a club to just hit the ball?

Some of our Plonk obstacles make you think a little differently about how you play the game. In one of our space saving, dexterity challenging holes, we task players with balancing the ball on the club head, whilst manoeuvring it around a track. If they make it all the way, the hole in one shot can be made, but if they drop the ball, it's back to the start!

WEIRD AND WACKY

As mini golf makers and crazy golf creators, we can't help but challenge ourselves to come up with the weirdest and wackiest golfstacles possible.

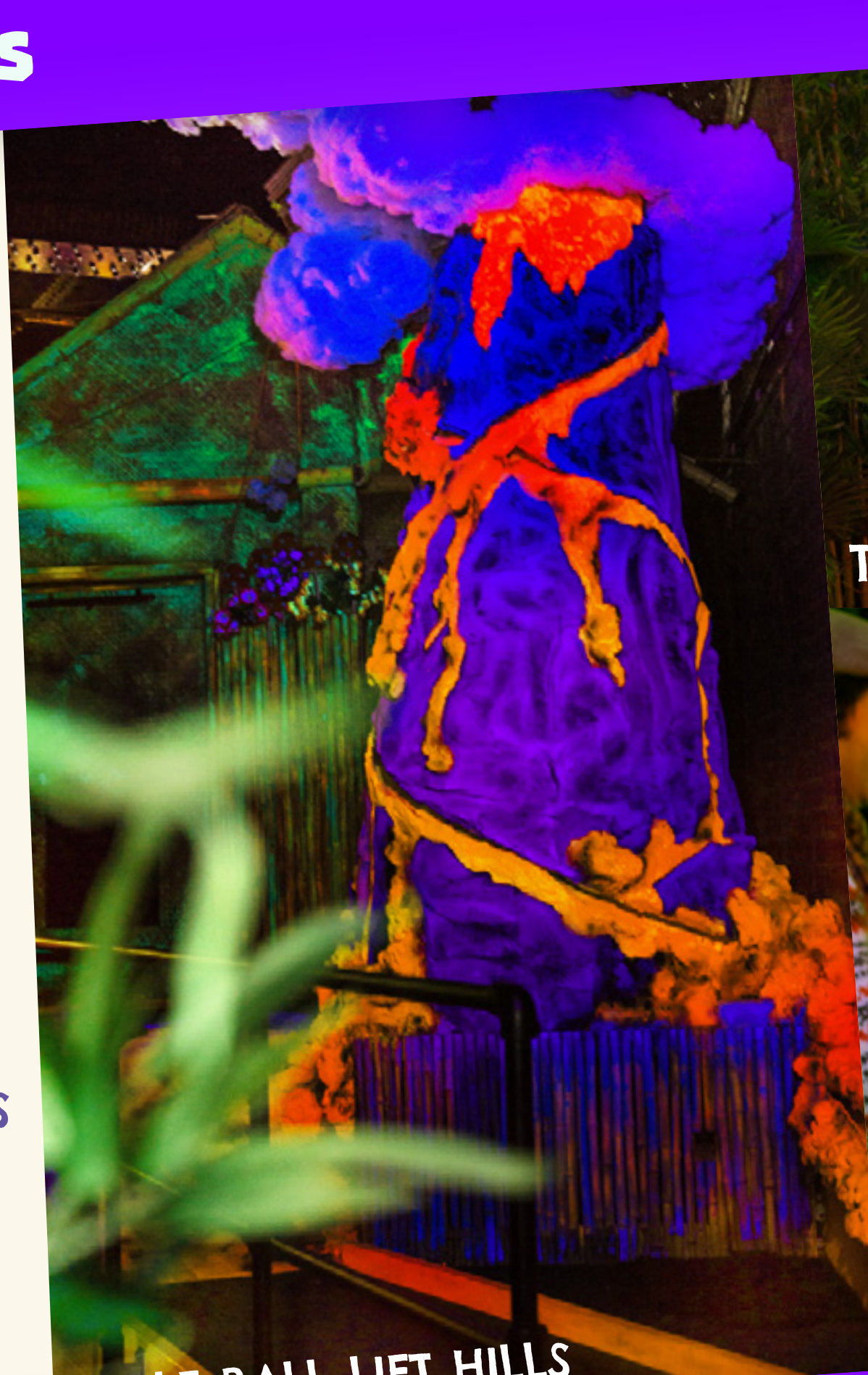
We've been known to convert old pool tables into holes, build foot stamping ball busting obstacles and design challenging maze tables. We've even built a full nine-hole puzzle room course before!

These mad designs have often been born out of creative constraints and compromise, showing that no matter the shape of your space we can design and build something special.

GOLF BALL LIFT HILLS

One of the Plonk team's favourite parts to use are our electric ball lift hills. These custom conveyor belts carry your ball high into the sky, only for it to come back down to the ground via a myriad of tunnels, paths and obstacles.

There is something about watching little balls roll down runs that we just love, and so do our customers. These really add an extra element of kinetic energy into any installation!



GOLF BALL LIFT HILLS



THE WEIRD AND WACKY



BALANCING HOLES

UV COURSES & SOCIAL MEDIA

SOCIAL MEDIA

Nothing shines on social media like one of our UV course installations!

Our UV designs are perhaps the most eye-catching and Instagram friendly of all our creations, and create the perfect backdrop for both selfies and photos of friends and family.

These eye-popping pics of otherworldly environments really stand out on social media feeds, generating endless free publicity and attention for the venues.

PHOTO SHOOTS

The camera loves UV environments, which has led to an additional revenue stream for these venues - we've had everything from TV shoots to celebrity photo shoots in our UV putting-paradises.

It's rare to get paid for your own marketing, but when Tinie Tempah was photographed for Q Magazine at our Dalston venue, we saw a huge influx of customers!

Our UV courses have also featured on News Nights, THIS WEEK, The Only Way is Essex, Date Night and a host of other reality television shows.



qmagazineuk



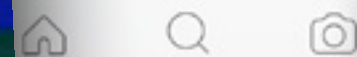
♥ 85 likes

qmagazineuk Tinie Tempah photographed by Marco Vittur at Plonk, Dalston for Q Magazine.



♥ 60 likes

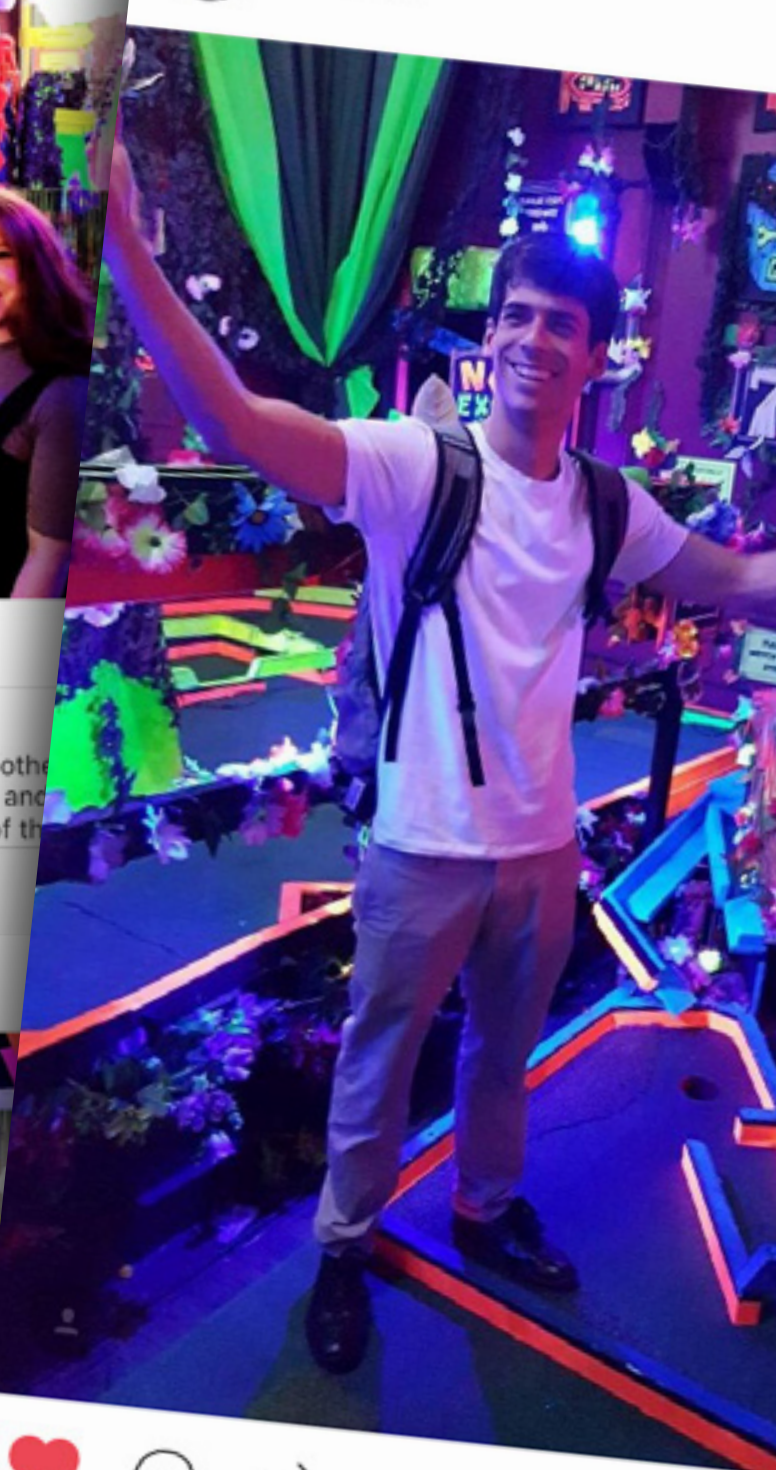
picsandputt Throwback to the other day we were out for a friend's birthday and had a little gem on the second floor of the



picsandputt
PLONK Golf >



holition



RAPPER TINIE TEMPANH at our DALSTON COURSE

PLONK

THEMING AND ENVIRONMENTS

UV COURSES

One way to make your course stand out is to make it hyper-coloured UV.

This style of course allows for almost unlimited creativity in the artistic design of the course, and promotes bold colours and unique designs.

Our guests have loved our UV environments in the past, and as an added benefit this style of course can reduce the cost of physical theming.

The only caveat is we do need a room free of ambient light sources to make this style effective.

UV MURALS

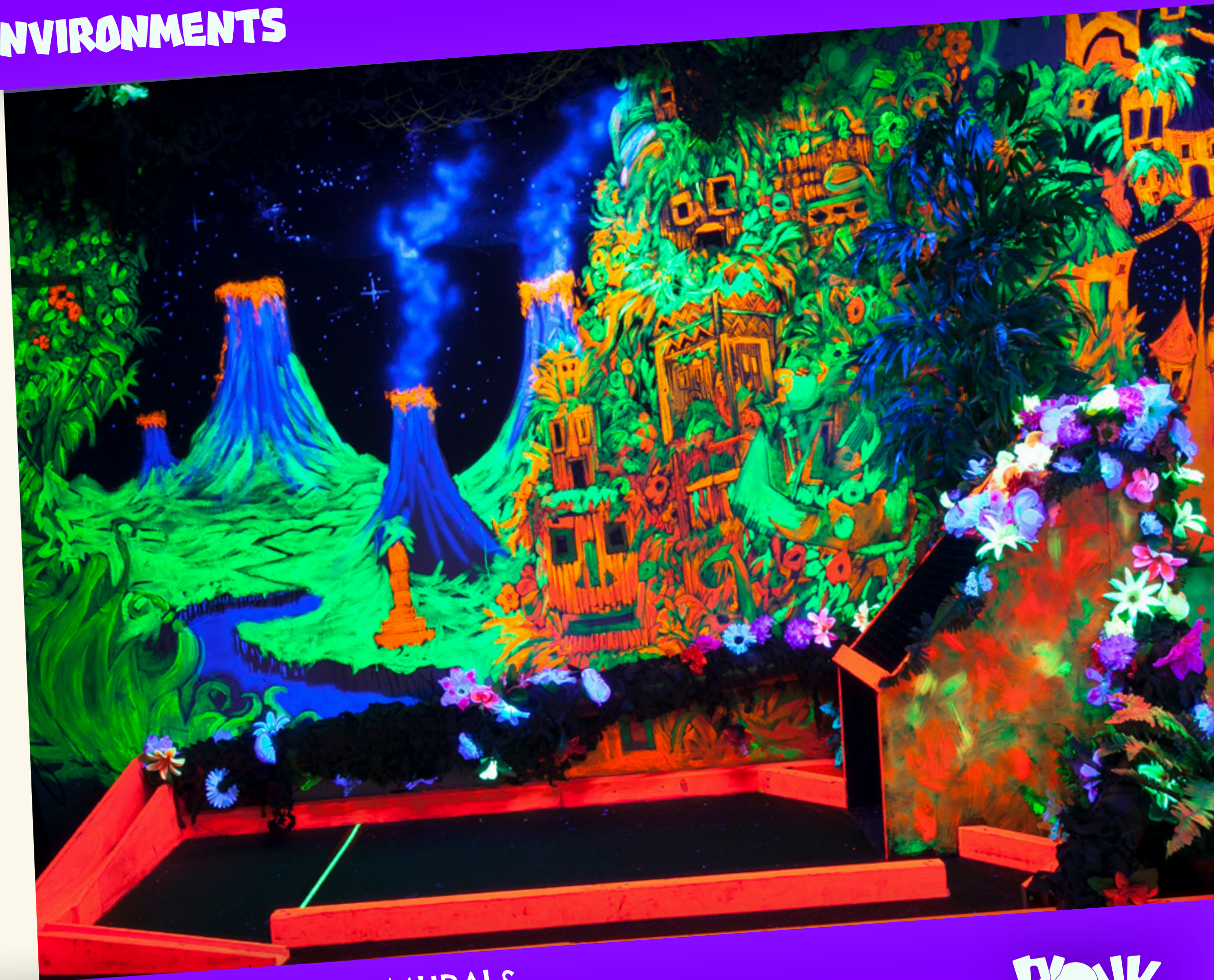
Most of our UV courses include hand painted murals to really set a bright and bold atmosphere in the available space.

We have been commissioned to design underwater backdrops, space themes and of course our Black Majic Tiki designs.

The murals and courses can also become 3D with the use of 3D glasses, which can be added to UV course package deals.

All of our paints are nontoxic, and the designs are painted onto boards which are mounted onto the walls, rather than being painted directly onto the walls.

If a budget does not allow for bespoke artwork, we can also print onto fluorescent paper to make for a more graphic UV wall covering.



UV PAINTINGS AND MURALS

PLONK

UV THEMING AND ENVIRONMENTS

UV OBSTACLES

All of our obstacles are playable under UV lighting. We make sure to paint all of the bumpers in a bright colour, to mitigate any trip hazards.

We also like to hide secret routes in the dark, so only the keenest of course surveyors will get the hole in one. Using signs to hint at a secret shot adds an extra level of detail and interactivity to the courses.

The painted courses are treated in several coats of a heavy varnish to make them wipe clean and still bright and bold under the black lights.

UV LIGHTING

All of our lighting works on waterproof LED RGB spotlights. These can change colour with the use of a remote to create different environments and moods whilst still maintaining operational reliability.

We also offer projection mapping services and designs to make your course really pop. We can either design bespoke motion graphics or purchase stock content depending on your specific needs.

The lights would be positioned across the course and we would use the services of a local third party electrician or in-house electrician to connect to the mains and issue a Minor Works certificate.

All lighting systems come with their own control panel and remote controls. All of the lighting has a very low draw and is therefore very cheap to run.



UV COURSE & THEMING



THEMING AND ENVIRONMENTS

SCULPTING

For many of our courses we have hand carved bespoke, large scale props. These set pieces really help to make the overall theming feel grand and otherworldly.

Our team of sculptors carve from polystyrene and then coat the pieces in long life and durable fibreglass for strength and durability.

The props are then painted by our scenic artists in all-weather paints, and finally given several coats of exterior varnish to keep them safe.

All of our sculpts are sketched out and concept art generated. They are then signed off with the client before we begin to sculpt.

Some of our sculpted props even form a part of the golf course. For example, some of our volcanos have ball runs built into them, so the balls travel down and around them – just like a helter skelter!

SMALLER PROPS

We can also source props from existing suppliers and props stores. Whilst these do also have an associated cost, they can be a useful method of reducing costs when required.

Our team of scenic painters can always paint over sourced props to make them feel more real, or fit into our themed environments in a more cohesive manner.

We also make small props such as lampshades, golf ball planters, relief work for walls and our famous light up clouds and in loops made from car tyres.



SCULPTURES / VOLCANOS

PLONK

THEMING AND ENVIRONMENTS

FAUX PLANTS

We work with some of the UK's leading importers of faux plants to create convincing jungles that don't require any upkeep!

With a wide range of plants and fauna to choose from, we can dress anything from English country gardens to tropical rainforests.

All of our Faux plants are inherently fire retardant, high quality and come in varying prices and finishes.

GREEN WALLS

A technique we frequently employ is to use 'green walls' as affordable wall covering and theming.

These green walls come in different standards, costs and styles. Some imitate thick jungle floors, some imitate moss and others have flowers and buds woven in to create even greater depth and detail.

Even our most basic range provides a very convincing effect, especially after we have further dressed the walls with climbers, hanging plants, flowers and signs.

All of our green walls are inherently flame retardant and high quality. At times we use camouflage netting to cover areas which are more out of sight but still need theming.

Our nets come in a range of colours and are also all flame retardant.



DRESSING

FAUX PLANTS

PLONK

THEMING AND ENVIRONMENTS

DRESSING

Our design team have a wealth of experience in theming and dressing existing structures and spaces.

All of our theming work can be manufactured off site and brought to site for installation.

In this picture we have clad an old shipping container and turned it into a Tiki Hut themed hospitality space for a venue in East London.

All of our panels and builds are treated in flame retardant varnishes and sprays, and all of our bamboo is eco-friendly and comes from sustainable sources.

LIGHTING

All of our lighting designs employ waterproof LED RGB spotlights. These can change colour with the use of a remote, to create different environments and moods.

Lights are positioned across the course and we would use the services of a local third party electrician or in-house electrician to connect to the mains.

All lighting systems come with their own control panel as well as minor works certificates.

We also supply all projects with spare lights in case of damage. All of the lighting has a very low draw and is therefore very cheap to run, and similarly does not create large amounts of heat.



TIKI HUTS / LIGHTING

THEMING AND ENVIRONMENTS

TEMPLE ZONE

Here you can see a Temple Zone that we created for a venue in east London – believe it or not, the temple facade is actually built around an old shipping container!

The walls are made from marine ply, plaster, poly carves and paint. As you can see, our texturing and paint rendering is of an unusually high quality, with depth and detail that you would not find in your average adventure golf centre or regional theme park. This is the benefit of having a team with experience working in film.

All of our Stonework is treated in strong renders and varnishes to keep it safe against stray gold balls and picking fingers... players always want to see if it is real or not!!

SCENIC PAINTING

Here at Plonk, we have a team of painters who can make a sheet of wood look like a copper door, or an old mirror. Anything is possible with the power of paint.

Our painters have had their training in the film and TV industry, so they are used to the camera (or customer!) getting up close and personal with their work.

The standard of our scenic work is unrivalled in the attractions industry. Please don't imagine any of those toy town colours and hues!



TEMPLE THEMING & FAUX STONEWORK

PLONK

SOME OF OUR CLIENTS



THANK YOU!

Thank you very much for taking the time to read our pack.

If you would like to visit one of our venues to see our courses in action, or have any further questions, please don't hesitate to get in touch with us via the contact details below.

Elliot Scott
PLONK GOLF DIRECTOR

ELLIOT@PLONKGOLF.CO.UK
07800 547 985



@PLONKGOLF



#PLONKGOLF



/PLONKGOLF

www.PLONKGOLF.co.uk



PLONK