

The background image shows a miniature golf course set in a jungle theme. In the center, a large, weathered wooden door with a blue patina features a large, metallic, dimpled golf ball as a handle. The door is flanked by two large, carved stone statues of ancient-looking figures. To the right, a red treasure chest sits on a small platform. The scene is decorated with various tropical plants and vines. The lighting is dramatic, with a bright light source on the left and a red glow emanating from the treasure chest area.

# PLONK

## CRAZY GOLF

DESIGN PACK



# THE DESIGN PROCESS

## FEASIBILITY STUDY

Initially we ask for an architectural drawing of the site if one is available. If not, we ask for rough measurements of the available space so that we can draw up our own internal floor plans to assess the feasibility of the project.

These floorplans are then shared with the client, to ensure that fire routes, flow and access points are all appropriately drawn up and accurate.

## COURSE DESIGN

Each of our courses is a bespoke design, and built to fit harmoniously within the specific venue.

Our design team listens to what the client is looking for in their golf course, and proceeds to make a mood board and some initial sketches and designs for feedback from the client.

Once this has been signed off and agreed, we take a small retainer fee to both fully cost the job and make technical drawings and concept art for a final sign off.

## WORKSHOP BUILD

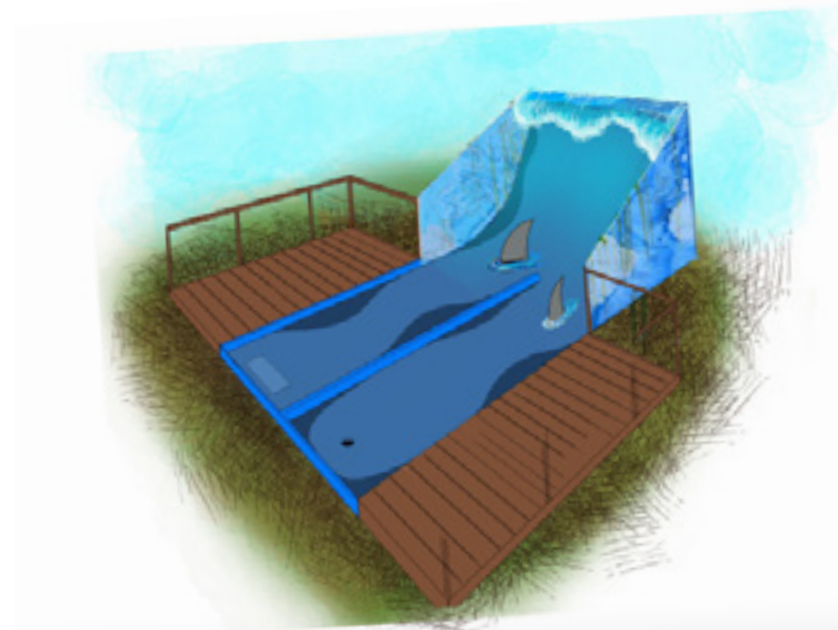
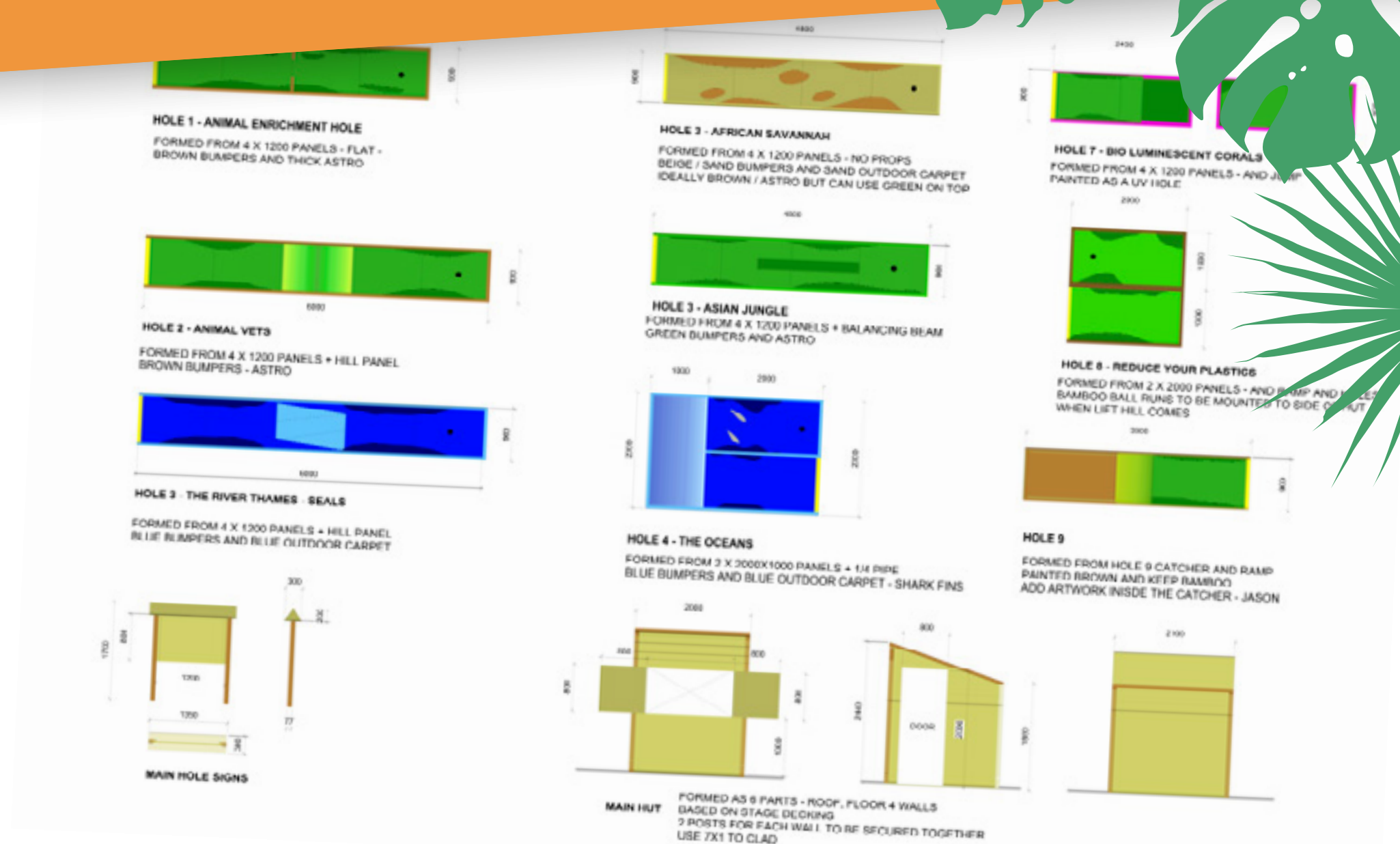
Once we have received final sign off on our designs, we begin construction work at our workshop.

We start by working on the theming elements for the course, as these are fitted first onsite. This is then followed by the build of course and its constituent elements.

## ONSITE INSTALL

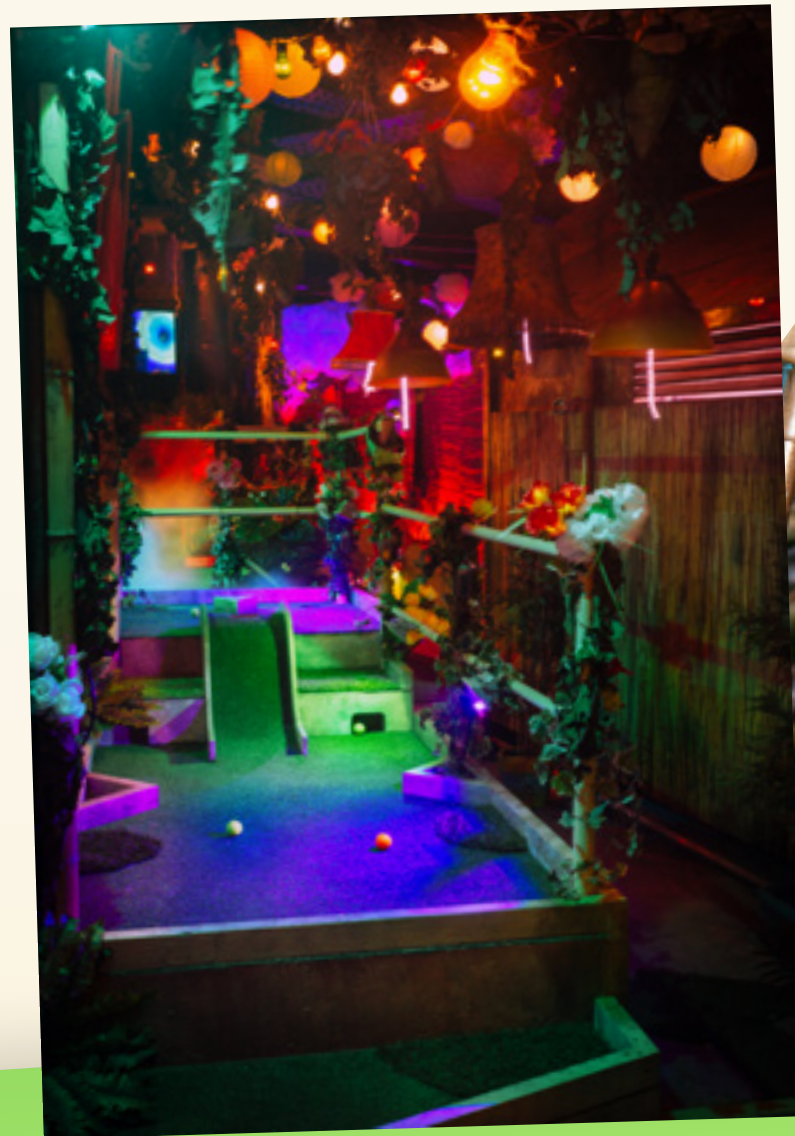
Our time on site varies depending on the scale of a project, access and the level of fitted work that is required.

Most of the work is completed off site to ensure that we do not get in the way of other works, interfere with ongoing trade or disturb the clients neighbours.





# PLONK COURSES - MOOD BOARDS





FLOORPLAN - FEASIBILITY PLANS / BASIC FLOORPLANS





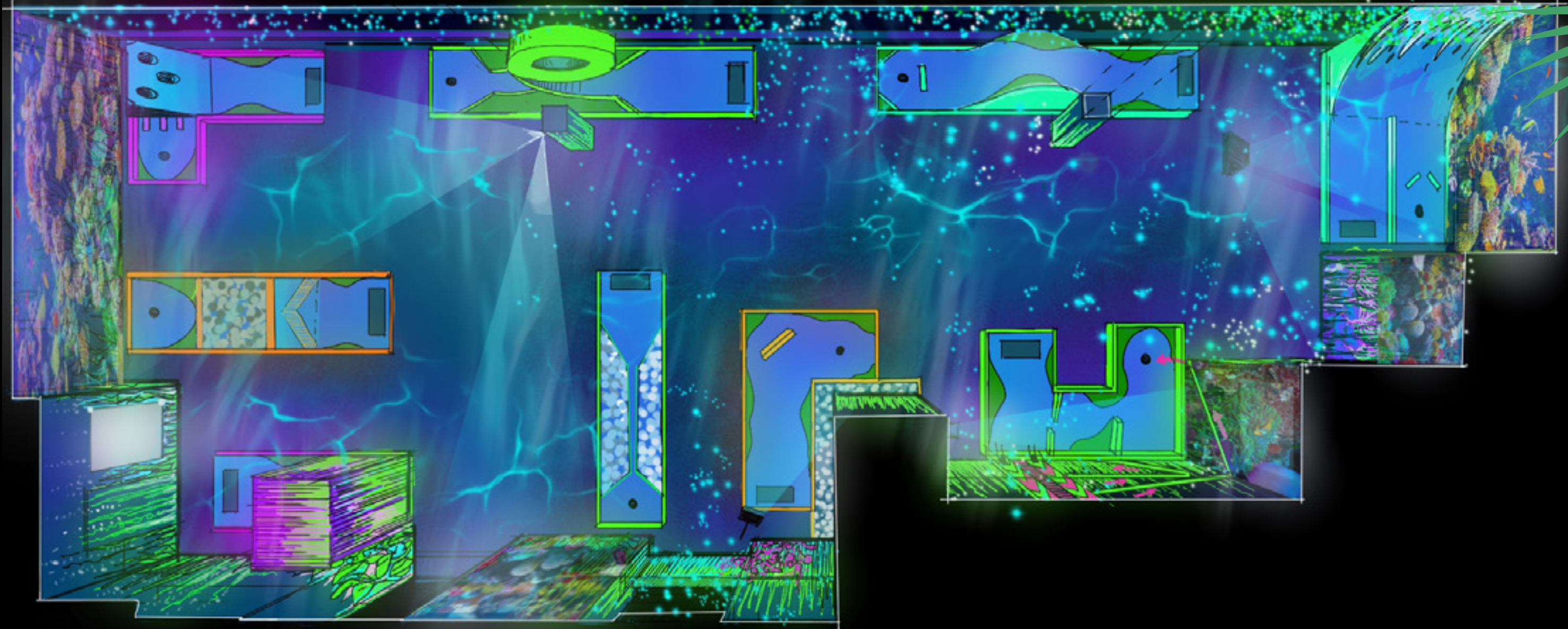
# PLONK COURSE - CONCEPT ART OF COURSE



This concept art is an interpretation of the final design. Elements will change during the design process.

PLONK

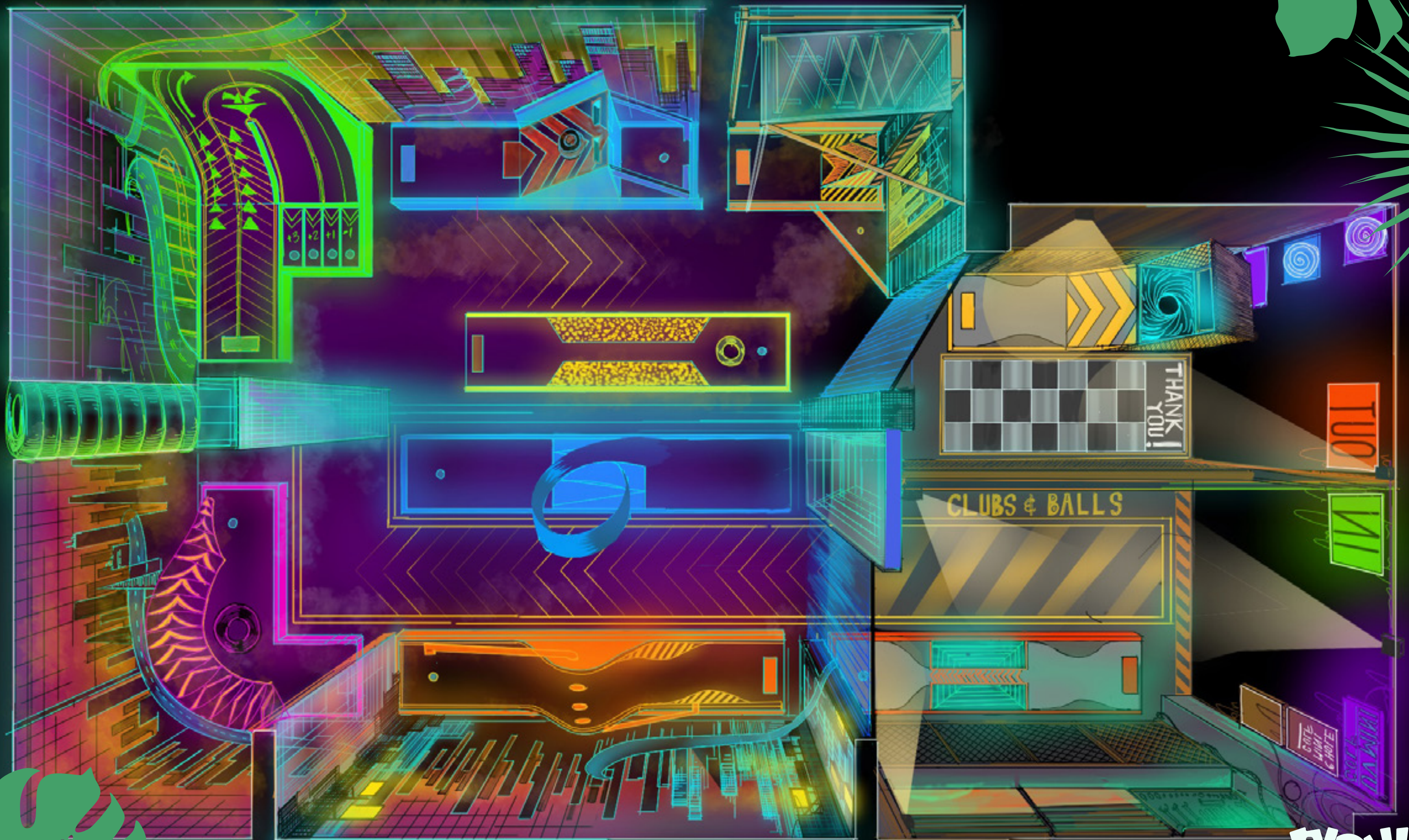




This concept art is an interpretation of the final design. Elements will change during the design process.



# PLONK COURSE - CONCEPT ART OF COURSE



This concept art is an interpretation of the final design. Elements will change during the design process.

**PLONK**



3D MODEL - PADDINGTON BEACH BAR PROJECT





## DESIGN ELEMENTS - THEMING



TEMPLE DOORWAY



WALL THEMING



WALL THEMING

PLONK

Based on the budgets, a level of theming is drawn up for concept art approval.



## DESIGN ELEMENTS - THEMING



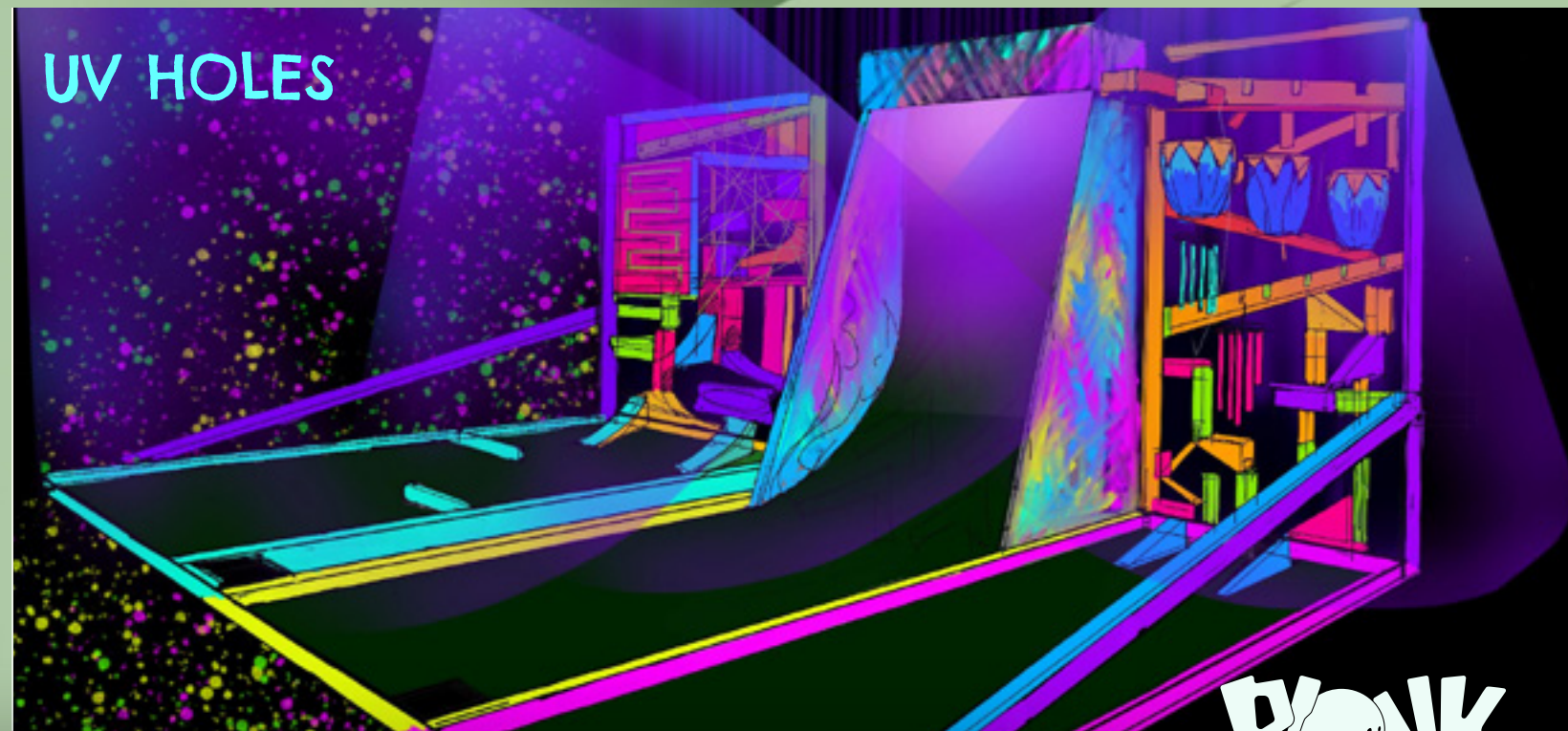
MAIN DOORWAYS



HOST DESK



WALL THEMING



UV HOLES



# GOLF OBSTACLES

## PLONK PINBALL

Our Plonk Pinball holes really are something else!

Once you have managed to get the ball onto the play field, you'll have to make a skill shot to get the ball into the hole - but beware, even on the Pinball hole there are sneaky routes, devilish traps and hidden bonuses!

So pull back on the plunger, aim well and hope that the ball finds its target!

## HILLS & RAMPS

What mini golf course would be complete without a hill or two.

Our hills come in varying gradients, some with bonus "hole in one" holes at the top.

We also have ramps which often have ball runs leading off of them taking you to the hole for the hole in one shot or back to beginning for another lesson in putting...

## LOOP DE LOOPS

Perhaps the most beloved of all our obstacles are our loops. These gravity defying golfstacles will send you ball flying out of the other side if you put too much effort into the shot... so it's not just all about the aim, it's also in the speed.

Our loops are traditionally 1m high, but depending on the available space we can make them a lot larger. We also have metal loops outdoor use - no course should be missing this element!



PLONK PINBALL



HILLS AND RAMPS

LOOPS



# GOLF OBSTACLES

## RAMPS AND RUNS

One of our earliest custom creations are our ball ramps and runs... there is nothing more satisfying than firing the ball up a ramp and watching it come back down, ideally straight into the hole.

These holes are often found on adult focussed courses but can still be played by younger players.

We would often recommend having a lift hill as well for less able players.

## BESPOKE PARTS

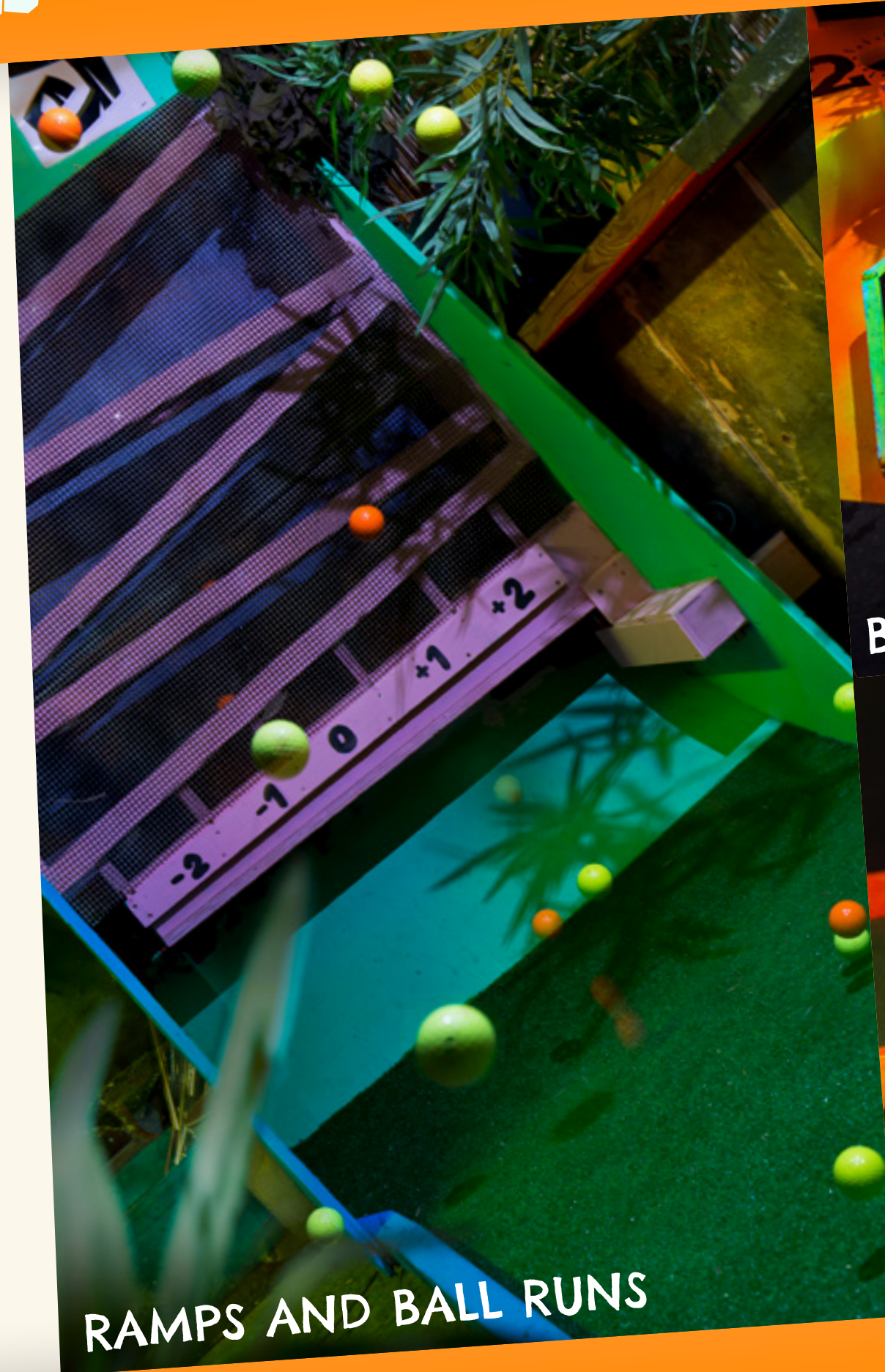
Sometimes when we design a course, we are left with a space to fill and there is just nothing in our arsenal that will do.

We often make bespoke obstacles to make the best use of space and play on a course. We've come up with some incredibly creative space filling solutions in the past, and some of these have become incredibly popular holes!

## 1/4 & 1/2 PIPES

We frequently like to challenge our players to think about the terrain they are playing on.

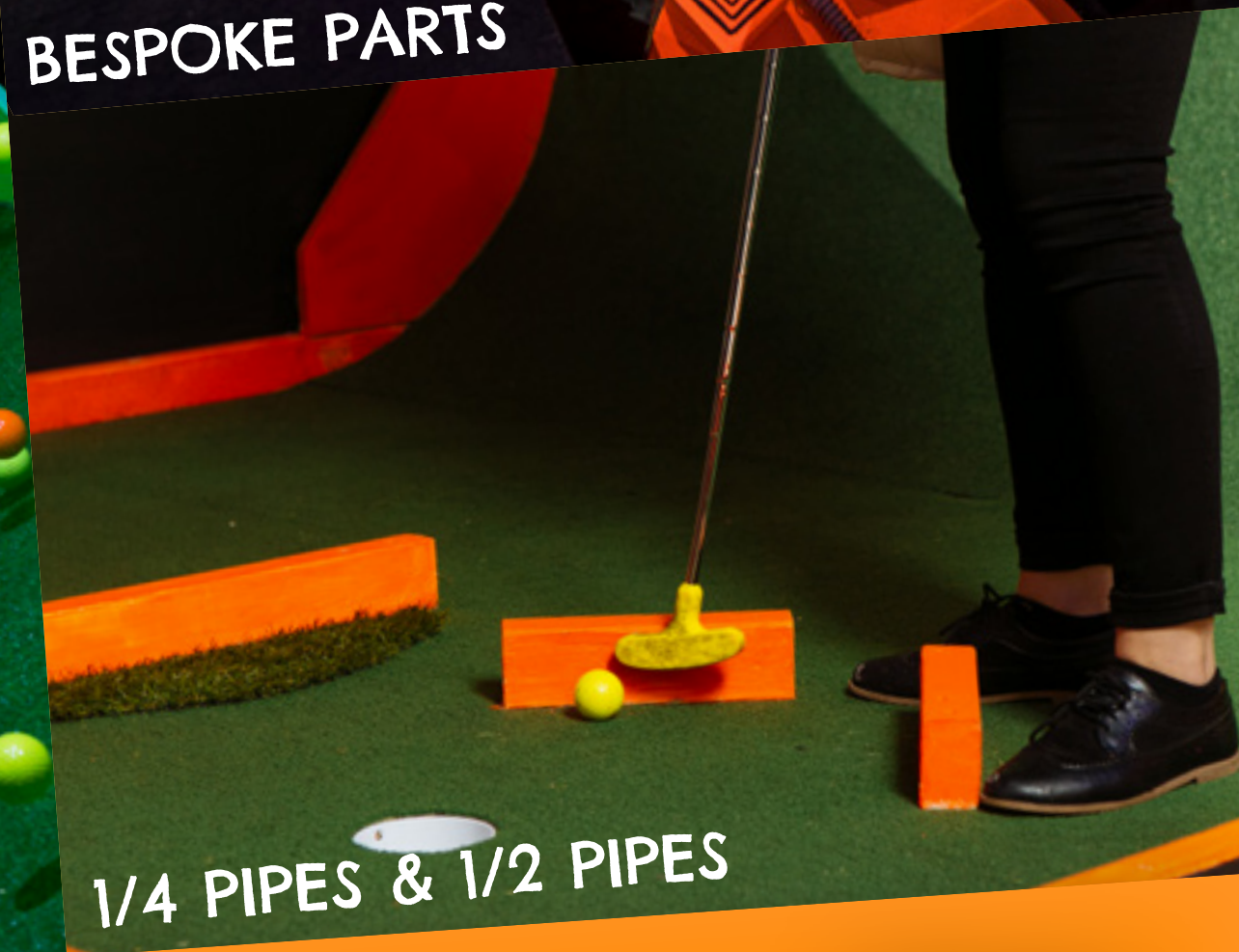
A quarter pipe or half pipe obstacle is a great way to do this. You instinctively think that if you just hit it up it will come down the other side... but it's just not as simple as that!



RAMPS AND BALL RUNS



BESPOKE PARTS



1/4 PIPES & 1/2 PIPES



# GOLF OBSTACLES

## BALANCING HOLES

Why use a club to just hit the ball?

Some of our Plonk obstacles make you think a little differently about how you play the game. In one of our space saving, dexterity challenging holes, we task players with balancing the ball on the club head, whilst manoeuvring it around a track. If they make it all the way, the hole in one shot can be made, but if they drop the ball, it's back to the start!

## WIERD AND WACKY

As mini golf makers and crazy golf creators, we can't help but challenge ourselves to come up with the weirdest and wackiest golfstacles possible.

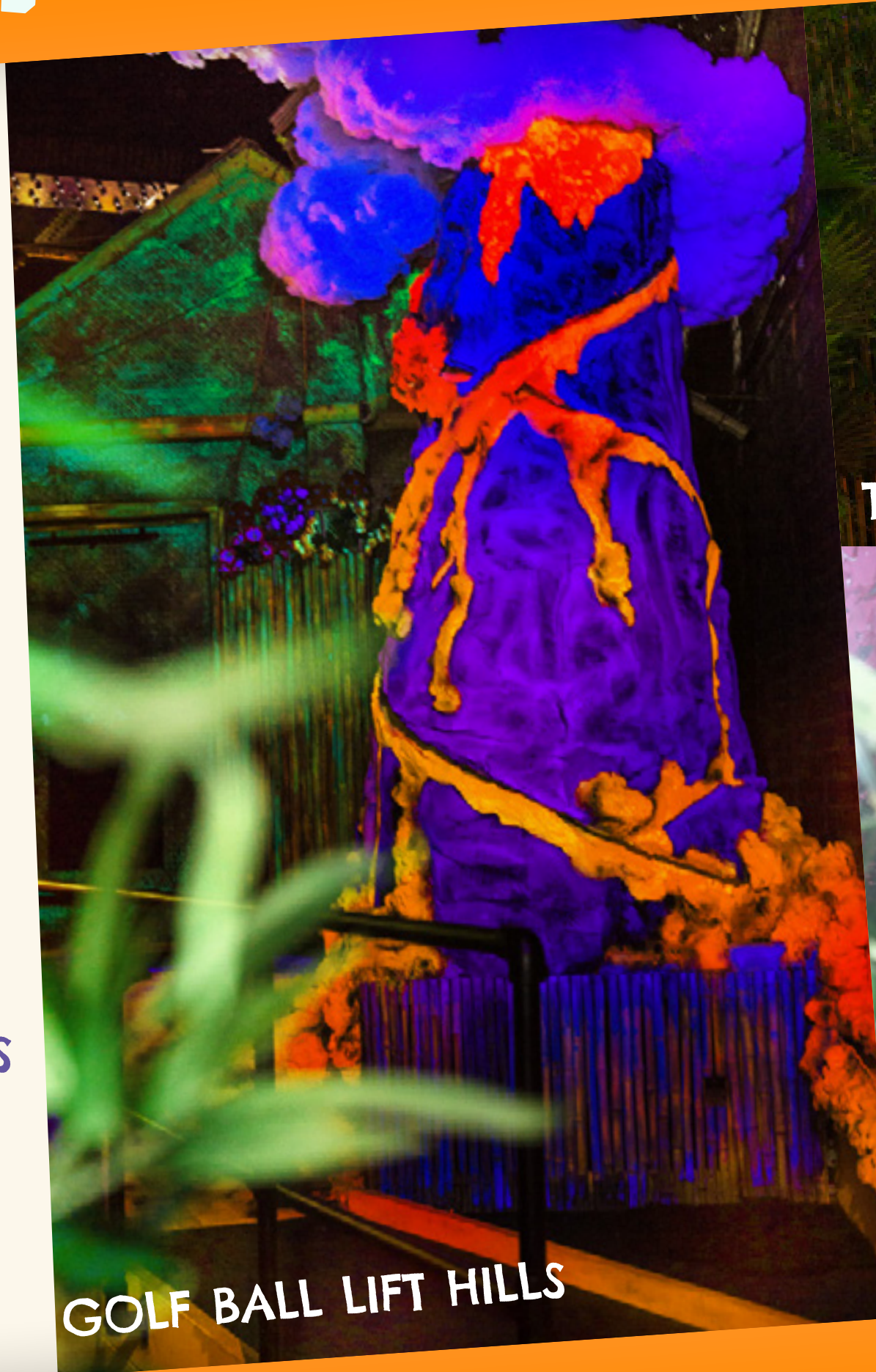
We've been known to convert old pool tables into holes, build foot stamping ball busting obstacles and design challenging maze tables. We've even built a full nine-hole puzzle room course before!

These mad designs have often been born out of creative constraints and compromise, showing that no matter the shape of your space we can design and build something special.

## GOLF BALL LIFT HILLS

One of the Plonk team's favourite parts to use are our electric ball lift hills. These custom conveyor belts carry your ball high into the sky, only for it to come back down to the ground via a myriad of tunnels, paths and obstacles.

There is something about watching little balls roll down runs that we just love, and so do our customers. These really add an extra element of kinetic energy into any installation!



GOLF BALL LIFT HILLS



THE WIERD AND WACKY



BALANCING HOLES



# THEMING AND ENVIRONMENTS

## BAMBOO

Bamboo is one of our most frequently used materials at PLONK. It is a strong, durable and visually interesting material to work with.

We source our Bamboo, reeds, rattans and cork from the UK's number one supplier. We can also guarantee that all of the bamboo we use has been sourced from eco sensitive projects and farms.

Although Bamboo is inherently a great looking material, our scenic painters always add an extra level of detail and age so that it does not look plastic and shiny.

We can use many different types of Bamboo, but they do come in at different price points.

All of our bamboo is treated with several coats of flame retardant glaze.



BAMBOO WORK

PLONK



# THEMING AND ENVIRONMENTS

## FAUX PLANTS

We work with some of the UK's leading importers of faux plants to create convincing jungles that don't require any upkeep!

With a wide range of plants and fauna to choose from, we can dress anything from English country gardens to tropical rainforests.

All of our Faux plants are inherently fire retardant, high quality and come in varying prices and finishes.

## GREEN WALLS

A technique we frequently employ is to use 'green walls' as affordable wall covering and theming.

These green walls come in different standards, costs and styles. Some imitate thick jungle floors, some imitate moss and others have flowers and buds woven in to create even greater depth and detail.

Even our most basic range provides a very convincing effect, especially after we have further dressed the walls with climbers, hanging plants, flowers and signs.

All of our green walls are inherently flame retardant and high quality. At times we use camouflage netting to cover areas which are more out of sight but still need theming.

Our nets come in a range of colours and are also all flame retardant.



DRESSING

FAUX PLANTS

PLONK



# THEMING AND ENVIRONMENTS

## TEMPLE ZONE

Here you can see a Temple Zone that we created for a venue in east London – believe it or not, the temple facade is actually built around an old shipping container!

The walls are made from marine ply, plaster, poly carves and paint. As you can see, our texturing and paint rendering is of a high quality, with depth and detail that you would not find in your average adventure golf centre or regional theme park. This is the benefit of having a team with experience working in film.

All of our Stonework is treated in strong renders and varnishes to keep it safe against stray golf balls.

## SCENIC PAINTING

Here at Plonk, we have a team of painters who can make a sheet of wood look like a copper door, or an old mirror. Anything is possible with the power of paint.

Our painters have had their training in the film and TV industry, so they are used to the camera (or customer!) getting up close and personal with their work.

The standard of our scenic work is unrivalled in the attractions industry. Please don't imagine any of those toy town colours and hues!



# TEMPLE THEMING & FAUX STONEWORK

**PLONK**



# THEMING AND ENVIRONMENTS

## DRESSING

Our design team have a wealth of experience in theming and dressing existing structures and spaces.

All of our theming work can be manufactured off site and brought to site for installation.

In this picture we have clad an old shipping container and turned it into a Tiki Hut themed hospitality space for a venue in East London.

All of our panels and builds are treated in flame retardant varnishes and sprays, and all of our bamboo is eco-friendly and comes from sustainable sources.

## LIGHTING

All of our lighting designs employ waterproof LED RGB spotlights. These can change colour with the use of a remote, to create different environments and moods.

Lights are positioned across the course and we would use the services of a local third party electrician or in-house electrician to connect to the mains.

All lighting systems come with their own control panel as well as minor works certificates.

We also supply all projects with spare lights in case of damage. All of the lighting has a very low draw and is therefore very cheap to run, and similarly does not create large amounts of heat.



TIKI HUTS / LIGHTING



# THEMING AND ENVIRONMENTS

## SCULPTING

For many of our courses we have hand carved bespoke, large scale props. These set pieces really help to make the overall theming feel grand and otherworldly.

Our team of sculptors carve from polystyrene and then coat the pieces in long life and durable fibreglass for strength and durability.

The props are then painted by our scenic artists in all-weather paints, and finally given several coats of exterior varnish to keep them safe.

All of our sculpts are sketched out and concept art generated. They are then signed off with the client before we begin to sculpt.

Some of our sculpted props even form a part of the golf course. For example, some of our volcanos have ball runs built into them, so the balls travel down and around them – just like a helter skelter!

## SMALLER PROPS

We can also source props from existing suppliers and props stores. Whilst these do also have an associated cost, they can be a useful method of reducing costs when required.

Our team of scenic painters can always paint over sourced props to make them feel more real, or fit into our themed environments in a more cohesive manner.

We also make small props such as lampshades, golf ball planters, relief work for walls and our famous light up clouds. These are all made to order.



SCULPTURES / VOLCANOS

PLONK



# THEMING AND ENVIRONMENTS - CASE STUDY

## GERALD

Some of our theming could not be more venue specific - take Gerald the Walrus for example!

The Horniman Museum and Gardens in South London asked us if we could create an icon for their course - something that would both catch people's eye and be a useful tool for promotion on social media.

After a visit to the Horniman we couldn't help but be entranced by their rather unusual taxidermy walrus; He was the first walrus specimen in the country, but because so few people at the time knew what a walrus should look like, he'd been overstuffed!

## SOCIAL MEDIA

We immediately suggested that we make our very own walrus, Gerald, to be a prominent feature on the course.

They agreed, and we quickly got to work, first making a bespoke polystyrene sculpt which we then covered in fibreglass - mainly to make him strong enough to support the weight of the children who visit the course.

He's since become almost as much loved as the original, and has been promoted extensively on social media as a mascot for the course. Items like this can make your course particularly eye catching and social media friendly. This will naturally be seen by friends of your players and increase awareness of your Plonk Course. We all love a bit of free advertising!



GERALD THE WALRUS at THE HORNIMAN MUSEUM & GARDENS

PLONK



# THEMING AND ENVIRONMENTS - BIG WAVE

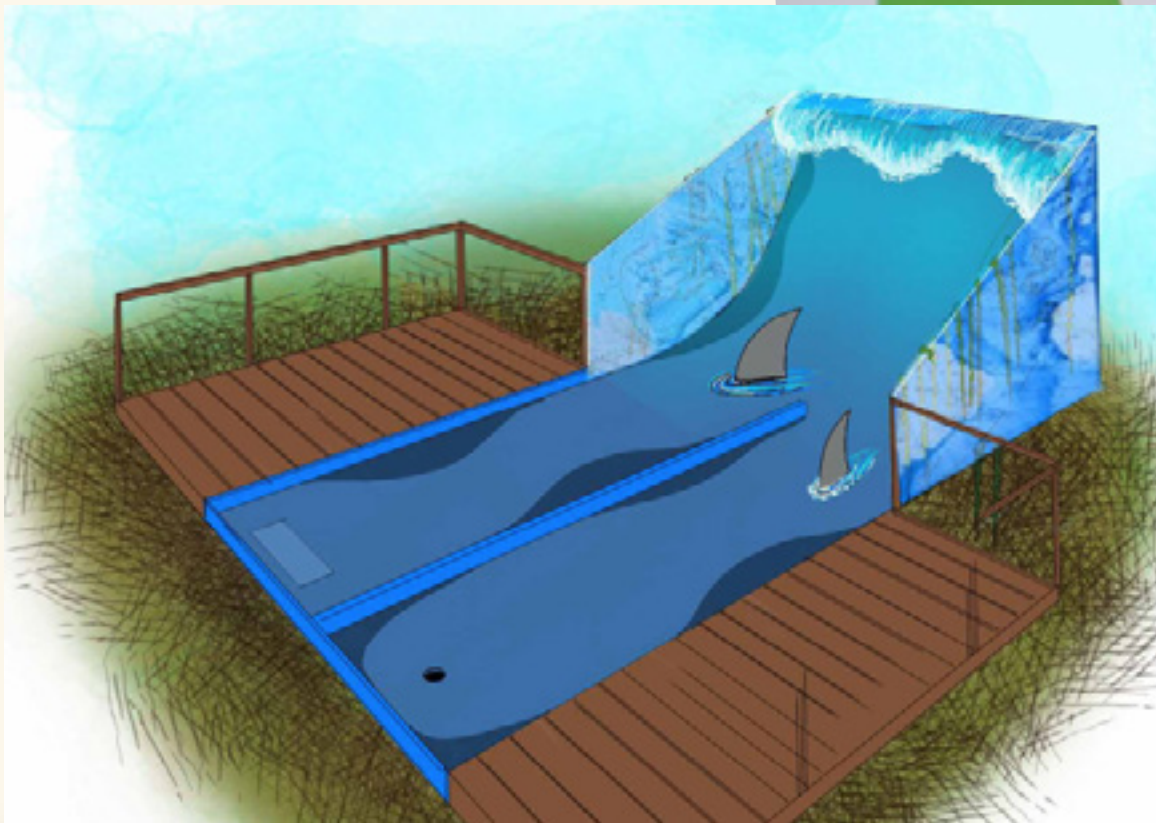
## SURFS UP

For our collabortaion with London Zoo, we worked together to build 9 holes of mini golf to symbolise 9 of their consaervation projects around the world.

Each hole had an information sign and some theming. A key parameter of the design process was not to use plastics, so we made the entire course out of wood.

Our graphic designers made the artwork for the information boards, whilst our carpenters and painters constructed the bespoke modular hole from scratch, at our workshop.

## DESIGN TO BUILD



OUR BIG WAVE AT ZSL LONDON ZOO

PLONK



# UV THEMING AND ENVIRONMENTS

## UV COURSES

One way to make your course stand out is to make it hyper-coloured UV.

This style of course allows for almost unlimited creativity in the artistic design of the course, and promotes bold colours and unique designs.

Our guests have loved our UV environments in the past, and as an added benefit this style of course can reduce the cost of physical theming.

The only caveat is we do need a room free of ambient light sources to make this style effective.

## UV MURALS

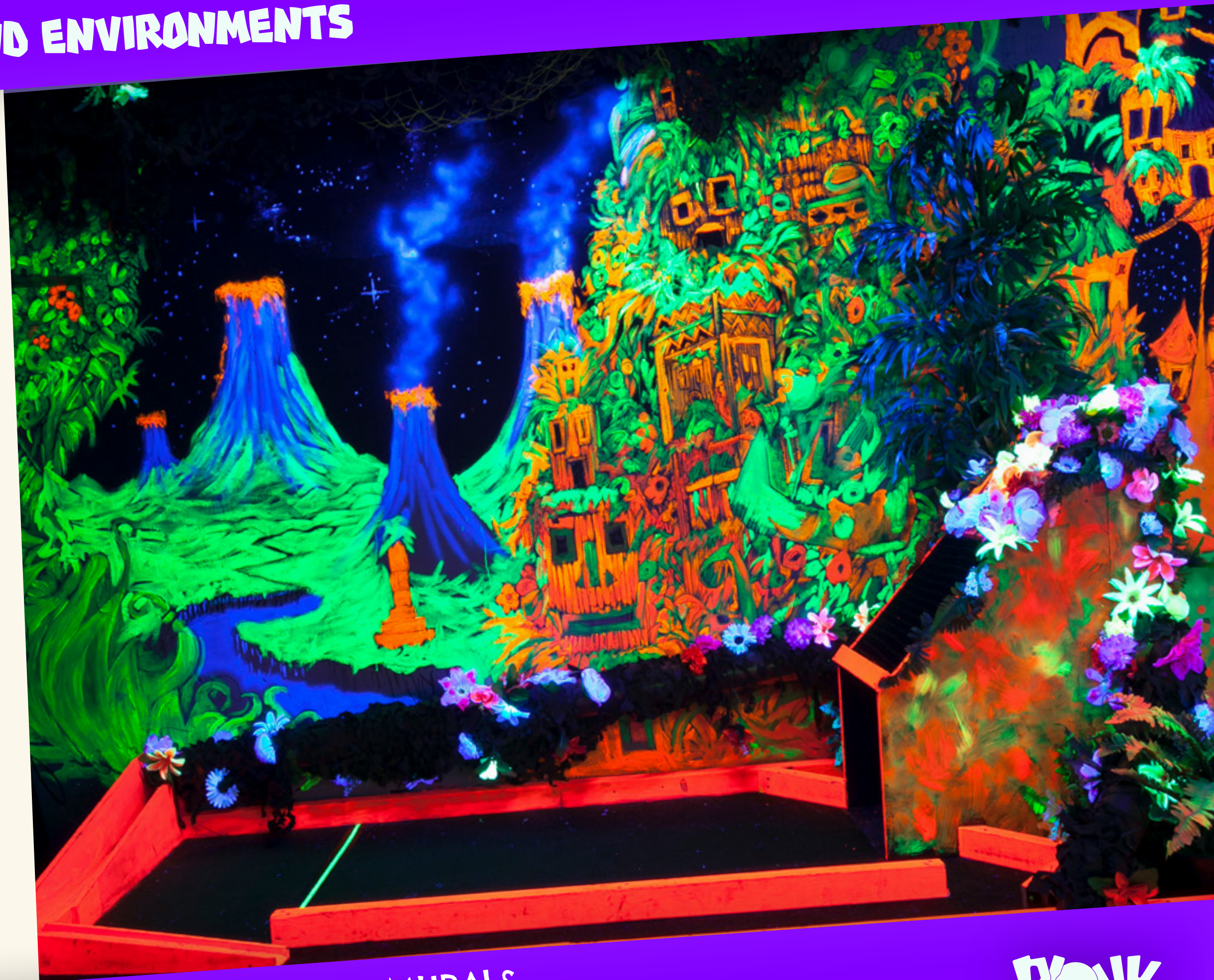
Most of our UV courses include hand painted murals to really set a bright and bold atmosphere in the available space.

We have been commissioned to design underwater backdrops, space themes and of course our Black Majic Tiki designs.

The murals and courses can also become 3D with the use of 3D glasses, which can be added to UV course package deals.

All of our paints are nontoxic, and the designs are painted onto boards which are mounted onto the walls, rather than being painted directly onto the walls.

If a budget does not allow for bespoke artwork, we can also print onto fluorescent paper to make for a more graphic UV wall covering.



## UV PAINTINGS AND MURALS

**PLONK**



# UV THEMING AND ENVIRONMENTS

## UV OBSTACLES

All of our obstacles are playable under UV lighting. We make sure to paint all of the bumpers in a bright colour, to mitigate any trip hazards.

We also like to hide secret routes in the dark, so only the keenest of course surveyors will get the hole in one. Using signs to hint at a secret shot adds an extra level of detail and interactivity to the courses.

The painted courses are treated in several coats of a heavy varnish to make them wipe clean and still bright and bold under the black lights.

## UV LIGHTING

All of our lighting works on waterproof LED RGB spotlights. These can change colour with the use of a remote to create different environments and moods whilst still maintaining operational reliability.

We also offer projection mapping services and designs to make your course really pop. We can either design bespoke motion graphics or purchase stock content depending on your specific needs.

The lights would be positioned across the course and we would use the services of a local third party electrician or in-house electrician to connect to the mains and issue a Minor Works certificate.

All lighting systems come with their own control panel and remote controls. All of the lighting has a very low draw and is therefore very cheap to run.



## UV COURSE & THEMING

**PLONK**



# UV COURSES & SOCIAL MEDIA

## SOCIAL MEDIA

Nothing shines on social media like one of our UV course installations!

Our UV designs are perhaps the most eye-catching and Instagram friendly of all our creations, and create the perfect backdrop for both selfies and photos of friends and family.

These eye-popping pics of otherworldly environments really stand out on social media feeds, generating endless free publicity and attention for the venues.

## PHOTO SHOOTS

The camera loves UV environments, which has led to an additional revenue stream for these venues - we've had everything from TV shoots to celebrity photo shoots in our UV putting-paradises.

It's rare to get paid for your own marketing, but when Tinie Tempah was photographed for Q Magazine at our Dalston venue, we saw a huge influx of customers!

Our UV courses have also featured on News Nights, THIS WEEK, The Only Way is Essex, Date Night and a host of other reality television shows.

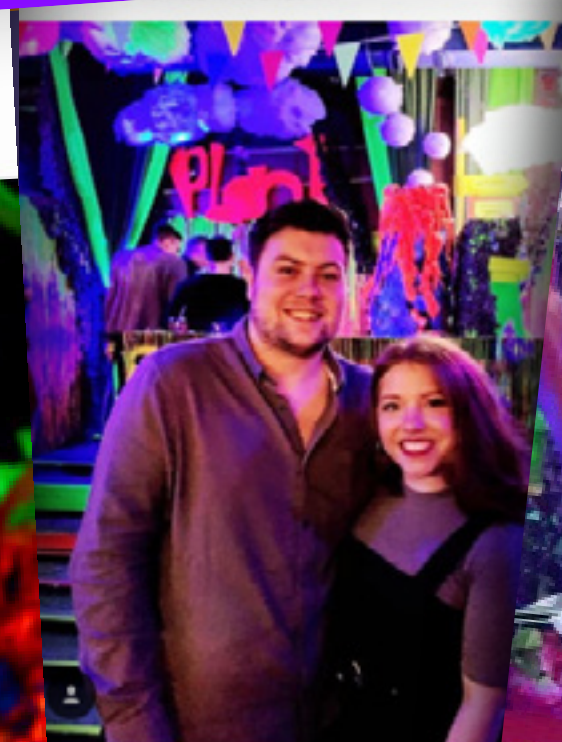


qmagazineuk



♥ 85 likes

qmagazineuk Tinie Tempah photographed by Marco Vittur at Plonk, Dalston for Q Magazine.



♥ 60 likes

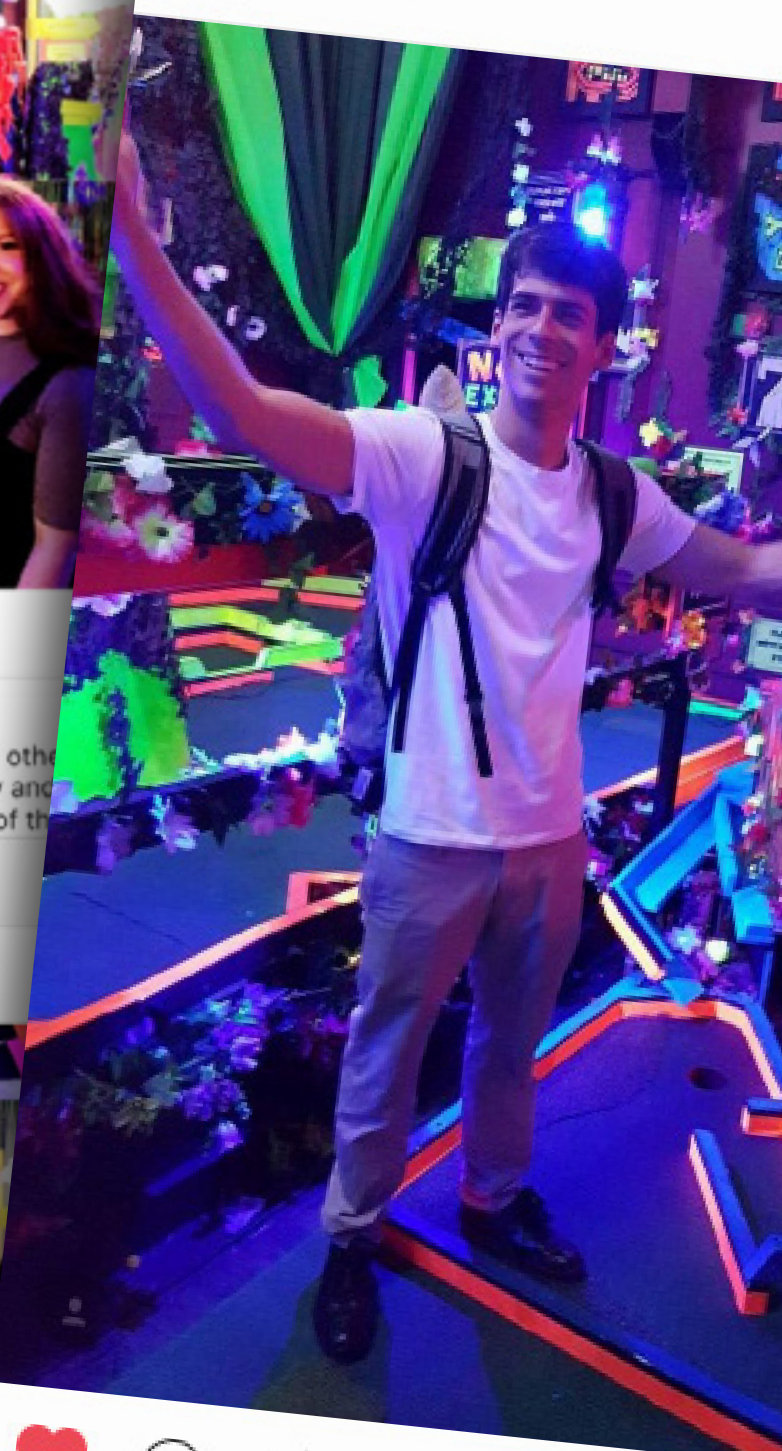
picsandputt Throwback to the other day we were out for a friend's birthday and had a little gem on the second floor of the



picsandputt  
PLONK Golf >



holition



RAPPER TINIE TEMPAH at our DALSTON COURSE

PLONK



## SOME OF OUR PARTNERS VENUES

**SECRET  
CINEMA**

**DREAMLAND**  
M A R G A T E

ZSL  
**LONDON  
ZOO**

**HORNIMAN**  
MUSEUM  
& GARDENS



**CAMDEN  
MARKET**

**TOPMAN**



**PLONK**



# THANK YOU!

Thank you very much for taking the time to read our pack.

If you would like to visit one of our venues to see our courses in action, or have any further questions, please don't hesitate to get in touch with us via the contact details below.

**Elliot Scott**  
**PLONK GOLF DIRECTOR**

**ELLIOT@PLONKGOLF.CO.UK**  
**07800 547 985**



**@PLONKGOLF**



**#PLONKGOLF**



**/PLONKGOLF**

**www.PLONKGOLF.CO.UK**



**PLONK**